

// HGTVGardens Album Creation Ixd

Version 1.0 | Created October 2, 2012 | Modified October 11, 2012





Table of Contents

Table of Contents	2
Change History	3
Photo Album Creation: Main Page: Overview	4
Photo Album Creation: Main Page: Album Title and Description	5
Photo Album Creation: Main Page: Album Category Select	6
Photo Album Creation: Main Page: Adding Tags	7
Photo Album Creation: Main Page: Inspiration Photo as Starter Image	8
Photo Album Creation: Photo Upload Page	9
Photo Album Creation: Photo Upload Page	10
Photo Album Creation: Photo Upload Page: Photo Grid	11
Photo Album Creation: Photo Upload Page: Photo Grid: Remove Photo	12
Photo Album Creation: Photo Upload Page: Photo Grid: Make Cover Photo	13
Photo Album Creation: Photo Upload Page: Photo Grid: Add/Edit Tags	14
Photo Album Creation: Photo Upload Page: Photo Grid: Add/Edit Location	15
Photo Album Creation: Photo Upload Page: Photo Grid: Reordering Photos	16
Photo Album Creation: Photo Upload Page: Photo Grid: Adding More Photos	17
Photo Album Creation: Photo Upload Page: Photo Grid: Adding More Photos	18
Photo Album Creation: Photo Album Preview Page	19
Photo Album Creation: Photo Album Edit Page	20
Photo Album Creation: Photo Album Edit Page: Title and Description	21
Photo Album Creation: Photo Album Edit Page: Photo Grid Overview	22
Photo Album Creation: Photo Album Edit Page: Removing Photo from Album	23
Photo Album Creation: Photo Album Edit Page: Make Cover Photo	24
Photo Album Creation: Photo Album Edit Page: Add/Edit Tags	25
Photo Album Creation: Photo Album Edit Page: Add/Edit Location	26
Photo Album Creation: Photo Album Edit Page: Reoordering Photos in Grid	27
Photo Album Creation: Photo Album Edit Page: Add More Photos	28
Photo Album Creation: Photo Album Edit Page: Add More Photos	29
Photo Album Creation: Photo Album Edit Page: Saving and Deleteng	30



A

Give your photo album a name (required)

My Favorite Rose Garde|

1

You have 173 characters left

2

Give your photo album a name (required)

Luptat lam, veliti offic temoles quaspedignis reptatios eturendebis etur mil intur, eatia

3

You have 0 characters left

B

Tell us a little more about your photo album (optional)

Git re cus eos aliquodi blabo. Uda cus, core eaquianto iducient quia voluptat. Harci-mus, sum voluptam, cus.Ro quae nonem ipis voluptaquia necte audicil lautem dipsa-piendit estrum digentium vent rercius daeribu sandit atem quas am ut quunte autatem laut fu- gias volectent vo acculpa dolum nonsequatem et ullabo.

453

You have 453 characters left

Tell us a little more about your photo album (optional)

Git re cus eos aliquodi blabo. Uda cus, core eaquianto iducient quia voluptat. Harci-mus, sum voluptam, cus. Ro quae nonem ipis voluptaquia necte audicil lautem dipsa-piendit estrum digentium vent rercius daeribu sandit atem quas am ut quunte autatem laut fu- gias volectent vo acculpa dolum nonsequatem et ullabo.

0

You have 0 characters left

A. Album Title

Required field with standard label above. This is a standard form text input with a 100 character max.

1

Text Area Active State: On click inside of text input area, the area will highlight and available character value (100) will be displayed in the form of a character counter.

2

2 Available Character Count: User has started typing text - the number descends by one for each keystroke. Removing characters increases available count by one for every keystroke.

3

3 Character Count Reached: Messaging text alerting the user that they have reached the max character count allowed for the text input area. Once the max value is reached, the user will not be allowed to type any more characters in the field until characters are deleted and the available count is less than the max value.

B. Album Description

Optional field with standard label above. This is a standard form text area with a 250 character max

1

Text Area Active State: On click inside of text input area, the area will highlight and available character value (250) will be displayed in the form of a character counter.

2

2 Available Character Count: User has started typing text - the number descends by one for each keystroke. Removing characters increases available count by one for every keystroke.

3

3 Character Count Reached: Messaging text alerting the user that they have reached the max character count allowed for the text input area. Once the max value is reached, the user will not be allowed to type any more characters in the field until characters are deleted and the available count is less than the max value.

© Scripps Networks Confidential and Proprietary

1

Please select a category (required)

Select one

2

Please select a category (required)

We've selected the FLOWERS cartegory for you based on what we know. Feel free to change it if you'd like.

Flowers

3

Album Category Select

- 1

Category Select: In many cases, upon album creation, we will not know ahead of time what category a gallery should be assigned to. This shows the default category select in this case.
- 2

Category Select - Category Value Passed: In some cases, we will be able to infer, from context, what category the album should belong to based on the referring page and context of the link/button that directed the user here. We should be able to map a topic or tag to a parent category based on the site taxonomy.

Ex. The referring link may say, "Create Your Rose Photo Album."

Based on site taxonomy, we can map this to the Flowers category. If we can successfully gather this information, the select dropdown will be pre-populated with the photo category selected on page load.
- 3

Label Text: If the category is pre-determined, message text will be displayed informing the user that we've assigned a category based on what we know, and that the user may change if desired.

A

1

Add tags (optional)

2

Start typing tags, or descriptive keywords, then select from the suggested list. If you don't find a tag that you like, type a new one in and it'll go on our suggested tag list for approval.

3

Add tags (optional)

carr|

3

Start typing tags, or descriptive keywords, then select from the suggested list. If you don't find a tag that you like, type a new one in and it'll go on our suggested tag list for approval.

4

Add tags (optional)

carr|

CARROTS

CARROWAY

4

Start typing tags, or descriptive keywords, then select from the suggested list. If you don't find a tag that you like, type a new one in and it'll go on our suggested tag list for approval.

5

Add tags (optional)

Carrots

5a

Start typing tags, or descriptive keywords, then select from the suggested list. If you don't find a tag that you like, type a new one in and it'll go on our suggested tag list for approval.

6

Add tags (optional)

Carrots

ro|

6

Start typing tags, or descriptive keywords, then select from the suggested list. If you don't find a tag that you like, type a new one in and it'll go on our suggested tag list for approval.

7

Add tags (optional)

Carrots

ro|

ROCKFLOWER

ROOTS

ROBOT CHICKEN

ROBINA

ROCHEA

ROSE

ROMULEA

7

Start typing tags, or descriptive keywords, then select from the suggested list. If you don't find a tag that you like, type a new one in and it'll go on our suggested tag list for approval.

8

Add tags (optional)

Carrots

Roots

8

Start typing tags, or descriptive keywords, then select from the suggested list. If you don't find a tag that you like, type a new one in and it'll go on our suggested tag list for approval.

B

1

Add tags (optional)

Carrots

Roots

1

Start typing tags, or descriptive keywords, then select from the suggested list. If you don't find a tag that you like, type a new one in and it'll go on our suggested tag list for approval.

Suggesting a tag

2

Carrots

Roots

ro|

2

Start typing tags, or descriptive keywords, then select from the suggested list. If you don't find a tag that you like, type a new one in and it'll go on our suggested tag list for approval.

3

Carrots

Roots

rootapalo

3

Start typing tags, or descriptive keywords, then select from the suggested list. If you don't find a tag that you like, type a new one in and it'll go on our suggested tag list for approval.

4

Carrots

Roots

Rootapalo

4

Start typing tags, or descriptive keywords, then select from the suggested list. If you don't find a tag that you like, type a new one in and it'll go on our suggested tag list for approval.

5

Suggested Tag

Thanks for your suggestion! We'll shoot you an email once we review.

Dont Show this again.

5

A. Adding Editing Tags

- 1 Add Tags Text Input:** Optional field. Text input with auto-suggest for pre-determined tags.
- 2 Message Text with Suggest a New Tag Link:** Simple instructive messaging text with a link for suggesting a new tag. On click, this link opens up a inline slider form. See this page, Area B.
- 3** User begins typing desired tag term
- 4** As user types into the field, an auto-suggest dropdown will appear and update its list per additional letter typed.
- 5** User may select any of the auto suggest tags at any time, and it will populate the input field and allow the user to begin typing another tag.
 - a. Remove Tag:** On click of the "close X" the tag is removed from the tag list.
- 6** User begins typing another tag
- 7** Auto-suggest dropdown displays (list scrolls if more than 7 items)
- 8** User has successfully added a second tag.

Note: User may add as many tags as desired.

B. Suggesting a Tag

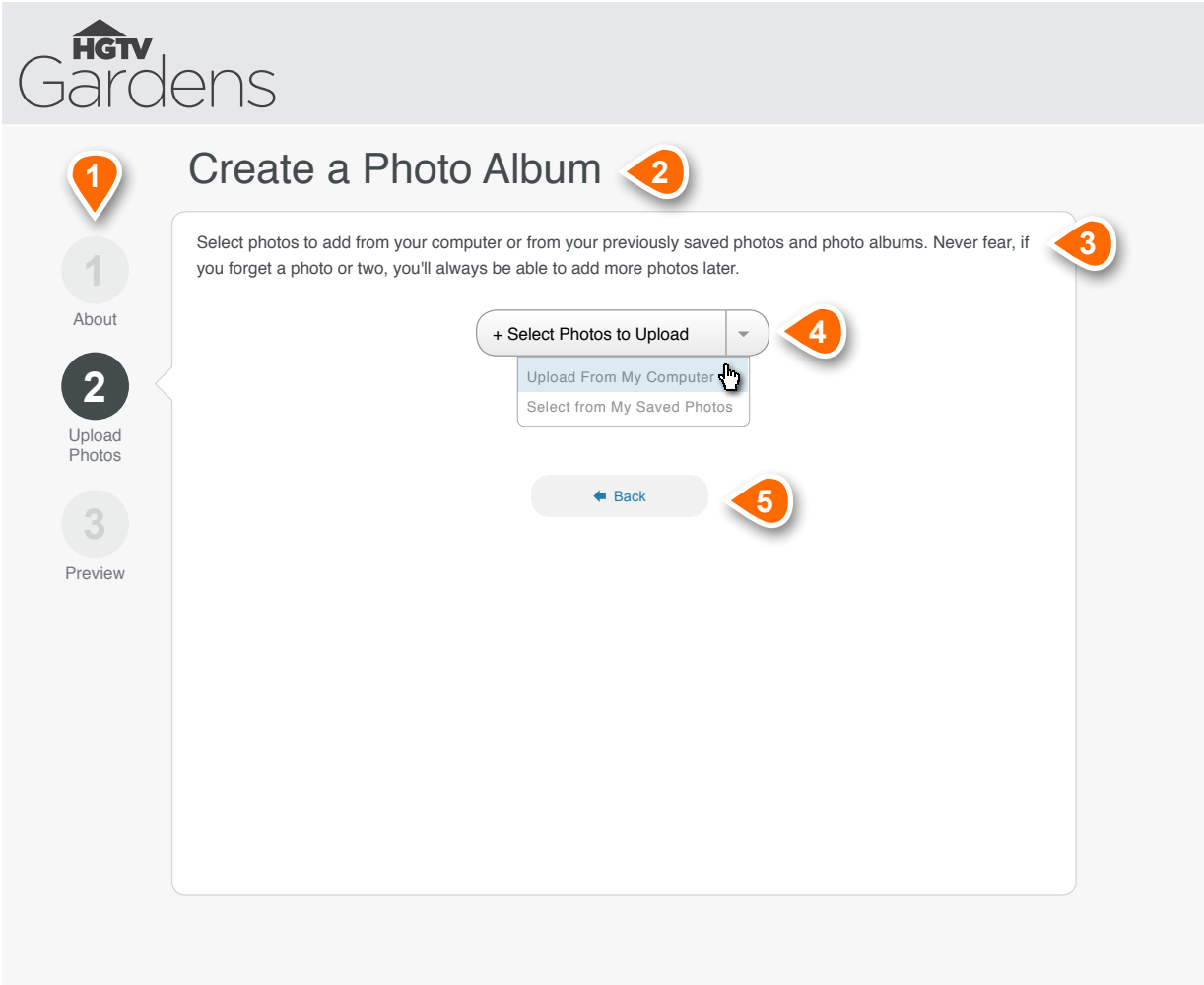
NOTE: This functionality has been deferred until phase 2 launch

- 1** User messaging letting user know they can submit tag
- 2** User begins typing tag, however, no matching tags found
- 3 After no more tags found, form dropdown reveals what user has typed only. User may select this once tag is to their liking.**
- 4** Once user selects option from dropdown, or hits return, the suggested tag appears in the tag list, but is styled differently to set it apart from an already existing approved tag.
- 5 Success Message:** After submission the user is presented with a success message pop over. Popover will close after 5 seconds if no action to close via close X is taken.
- 6 Don't Show This Again Link:** Text link, that on click, sets a system marker (cookie) so that the user will no longer receive the pop over for new tag suggestion.

Note: All suggested tags will be reviewed by HGTVGardens editorial before approval or denial. Process for this is still TBD.

A

HGTV HGTV Remodels HGTV Gardens HGTV's Frontdoor DIY Network HGTV Products HGTV Magazine

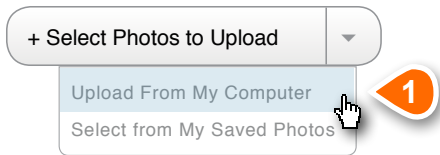


A. Upload Page Overview

The second step in the album creation process is the uploading of photos. This page is an overview of the main photo upload page.

- 1 Album Creation Steps:** Step 2 of the album creation step area is now more visible, while the others are subdued, indicating to the user their progress in the process.
- 2 Page Title:** Simple title text letting the user know they are on the album creation page.
- 3 Message Text:** Standard instructional text for the user. Note the text mentions that the user will always be able to add more photos at a later time if they forget a few during this process.
- 4 Select Photos to Upload Button:** Spilt button that, on click, displays a select dropdown with options for selecting photo the upload source. Users may choose to upload photos from their computer, or select them from previously saved photos in their profile.
- 5 Back to Previous Step Button:** On click, directs the user back one step in the process to the About the Album main page.

B

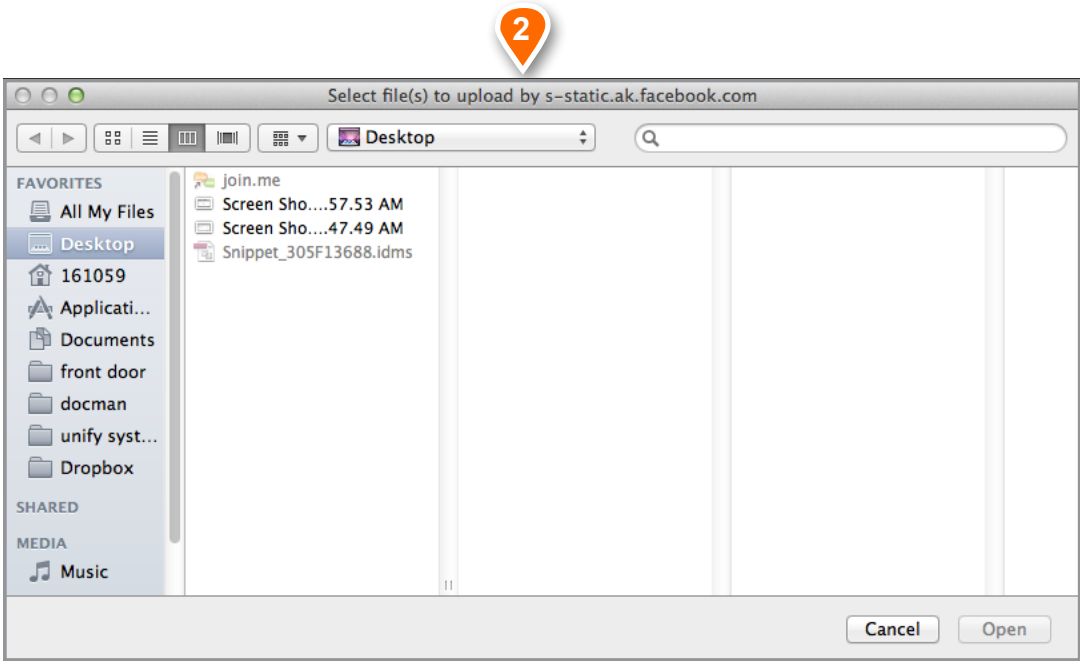


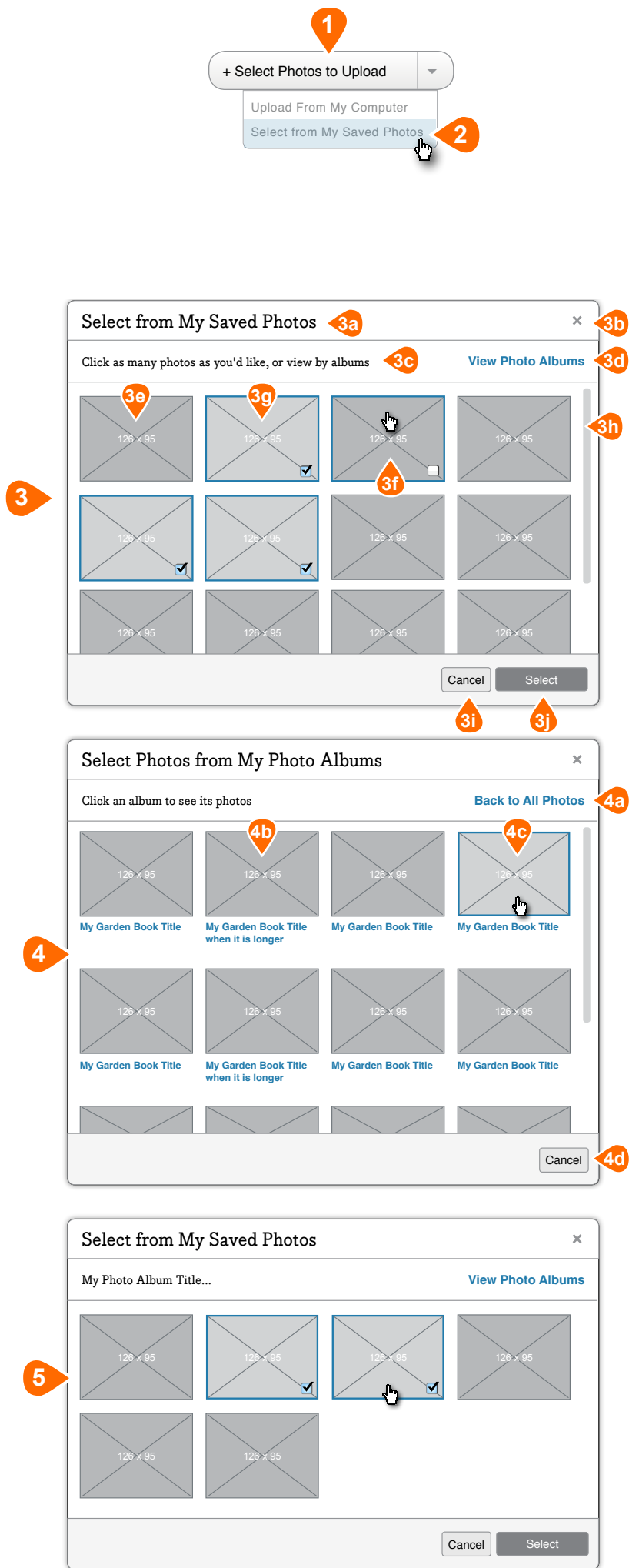
B. Upload from Computer

The second step in the album creation process is the uploading of photos. This page is an overview of the main photo upload page.

- 1 Select Dropdown:** User chooses to upload images from computer
- 2 OS File Select Menu:** Selection of the 'Upload From My Computer' option will launch the standard OS file select window. The user may then select a single or multiple (Ctrl+Click or Cmd+Click) images for upload.

On click of the OS window's open button, the modal will close and the Create Photo Album page will update, displaying the photos uploading into their photo grid.





Selecting from Saved Photos

This selection is only available if the user has saved or uploaded photos into their profile. It is suppressed otherwise.

- 1 Upload Button:** Split button that, on click, displays a select dropdown with options for selecting photo the upload source.
- 2 Select Dropdown:** User chooses to upload from photos saved to their HGTVGardens profile. This selection is only available if the user has saved or uploaded photos into their profile. On select, the Select from My Saved Photos modal experience is initiated.
- 3 Select from My Saved Photos Modal:** On dropdown menu select, this modal is opened and users may select photos saved to their profiles to add to this album. The thumbnails are arranged in a four-across grid that may be scrolled inside the modal window.

- a. Modal Title:** Standard modal text title
- b. Modal Close:** On click of this icon, the modal window closes with no further action taking place. No checkbox selected photos are saved, and any selected are forgotten by the system.
- c. Message Text:** Simple message text
- d. View Photo Album Link:** Text link that, on click, closes the Select from Photos modal and opens the Select from Photo Albums modal where the user will be able to select a photo album to choose photos from. ***This link is suppressed if the user has not created any photo albums yet.*** See Point 4

Note: There should be a noticeable transition between the closing on one modal and the opening of the other because the contents of each modal appear very similar. The first modal should fade out and the second modal should fade in. Fades should be quick and smooth. Decay and load time will need to be adjustable.

- e. Photo Thumbnail:** Standard 126x95 thumbnail. The grid will contain all photos the user has saved or uploaded into their profile.
- f. Thumbnail Hover State:** On mouse over any of the thumbnails in the grid, the photo will highlight and a select checkbox will appear as an overlay, allowing the user to select this photo to add to their album.
- g. Selected Photo Thumbnail:** Any photos selected via the checkbox will show as highlighted, and the selected checkbox will remain visible overlaid on the photo. Any selected photos may be deselected. Once deselected, the photo returns to the visual state shown in point 3e.
- h. Modal Scrollbar:** The modal is a fixed height with a photo viewing area sized to display part of the third row of photos. If a third row of photos exists (or more) a system scrollbar will appear to allow the user to browse the entire grid.
- i. Cancel Button:** On click of this button, the modal window closes with no further action taking place. No checkbox selected photos are added to the album, and any selected are forgotten by the system.
- j. Select Button:** Standard button input that, on click, adds the selected photos to the user's album. On select, the modal will close and the Create Photo Album page will update, displaying the photos uploading into the photo grid.

- 4 Select from My Photo Albums Modal:** Only visible if user has created photo albums. On click of the View Photo Albums Link (Point 3d), this modal is opened and users may select an album to narrow their photo selection by. The album thumbnails are arranged in a four-across grid that may be scrolled inside the modal window.

NOTE: Any functionality not specifically annotated in this modal is identical to the modal outlined in Point 3.

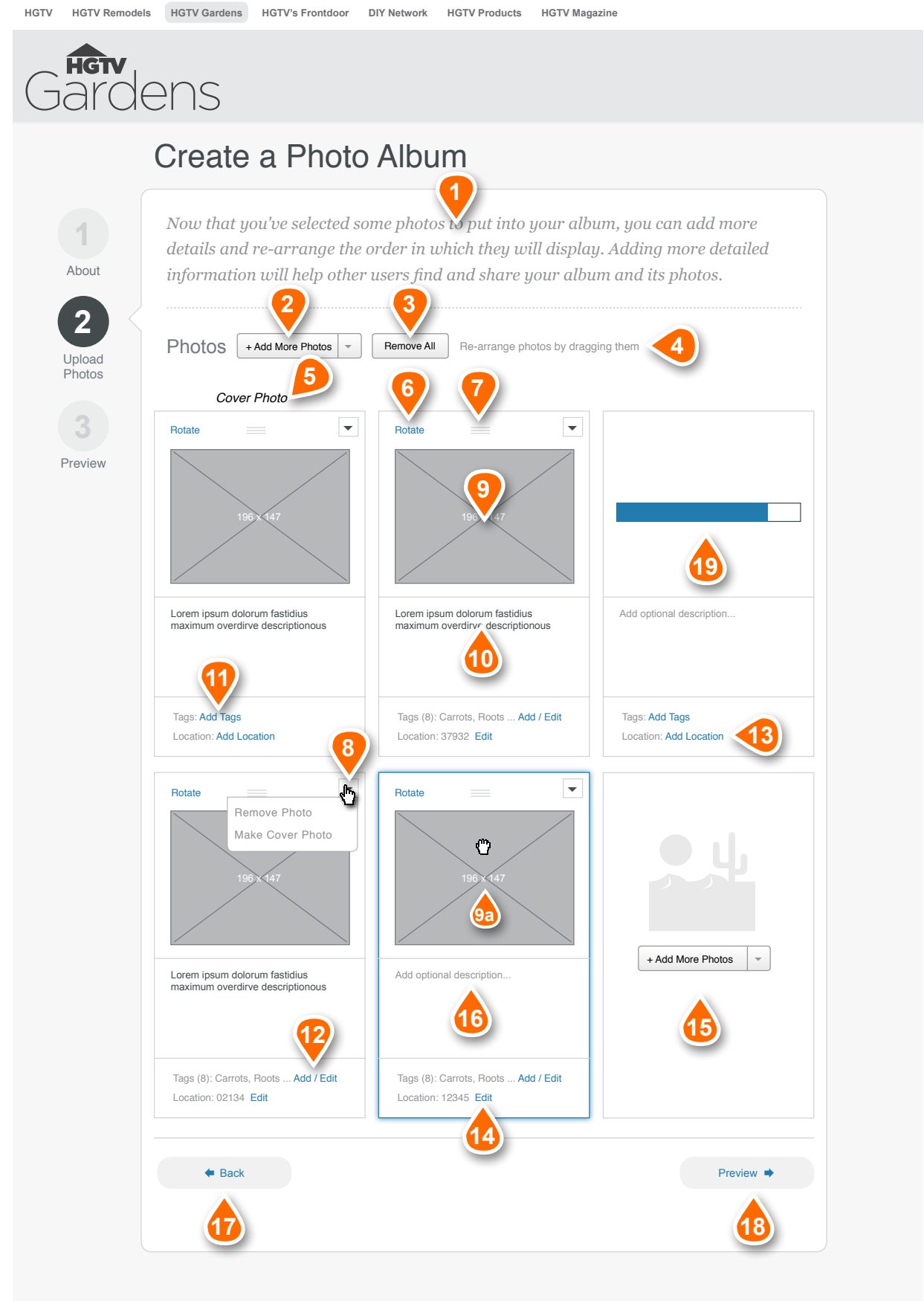
- a. Back to All Photos Link:** Text link that, on click, closes the Select from Photo Albums modal and opens the Select from My Saved Photos modal. See Point 3

Note: There should be a noticeable transition between the closing on one modal and the opening of the other because the contents of each modal appear very similar. The first modal should fade out and the second modal should fade in. Fades should be quick and smooth. Decay and load time will need to be adjustable.

- b. Album Thumbnail:** Standard 126x95 thumbnail of the album's cover photo, followed by a text link of the album's title. Both, on click, select the album, close this modal, and opens the Album Specific Photo Select modal where the user may select individual photos from the selected album.
- c. Thumbnail Hover:** On mouse over, the thumbnail should highlight to show interactivity.
- d. Cancel Button:** On click of this button, the modal window closes with no further action taking place. No checkbox selected photos are saved to the album, and any selected are forgotten by the system.

- 5 Select from My Saved Photos (Album Specific) Modal:** This modal only displays photos from the album selected in Point 4. All other modal functionality is identical to as outlined in Point 3.

NOTE: Any functionality not specifically annotated in this modal is identical to the modal outlined in Point 3.



19 Photo Uploading: The newly uploaded photos are shown here are in the process of uploading. Photos still in the upload process will display a status bar to monitor upload progress. Photos in upload process are not able to be interacted with until upload is complete. At that time, uploaded photos function as normal.

SEO NOTES:

-- Use photo description as ALT tag.

-- All images should have ALT tags.

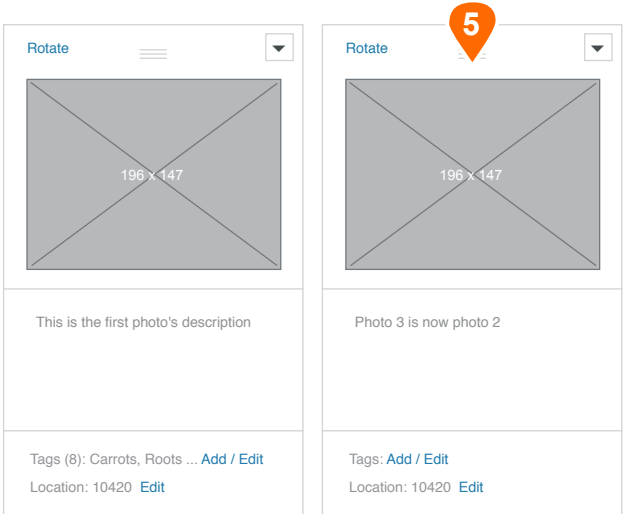
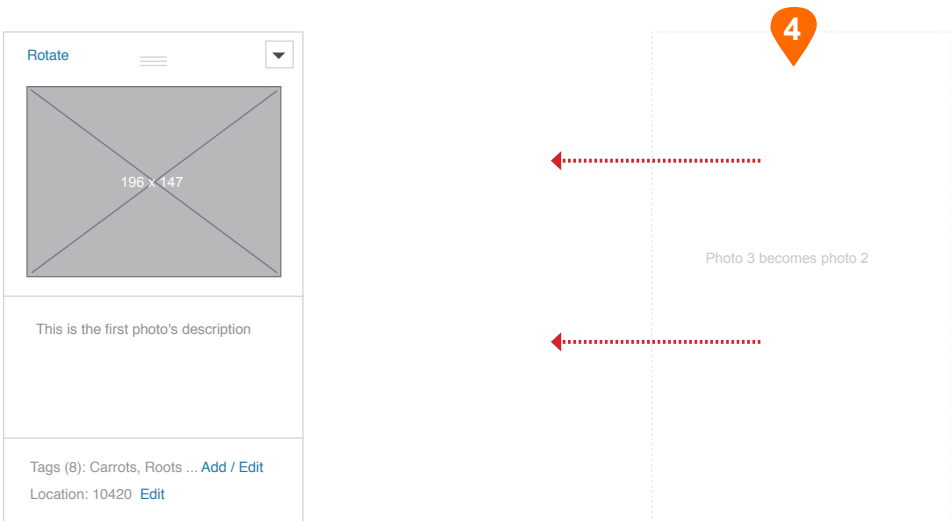
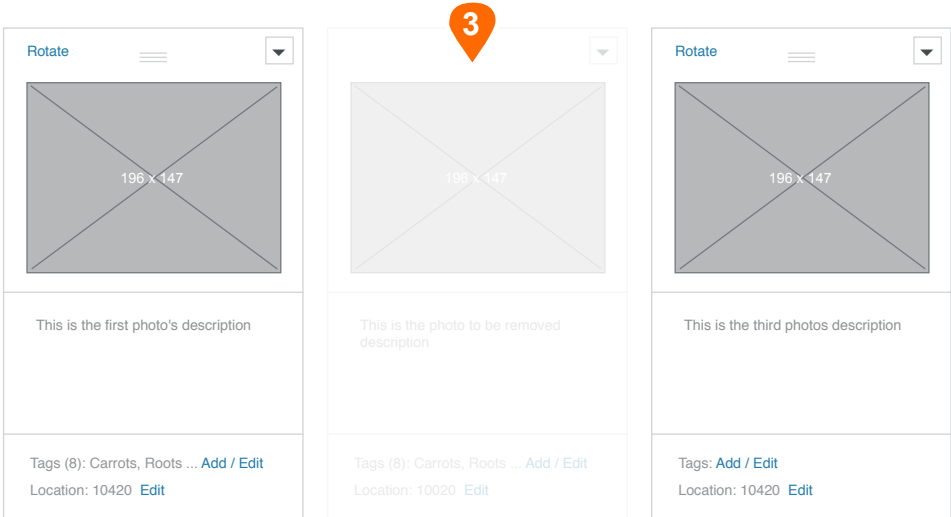
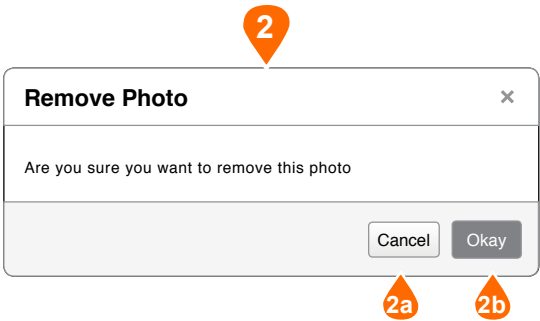
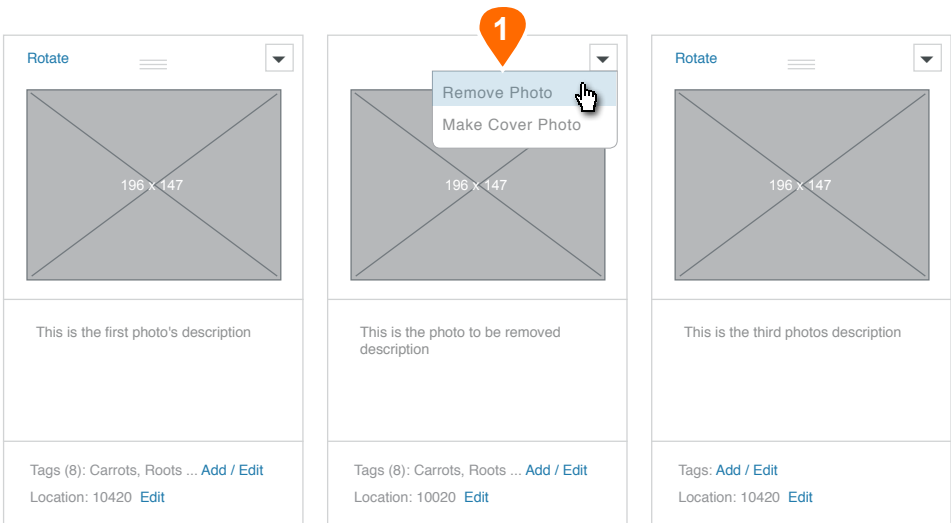
Photo Grid Overview

Once users add photos from their CPU, saved profile photos or a combination of both, the photo upload page will refresh and the photo grid will appear.

The grid is a three-across grid containing a cell for each photo currently uploaded into the album. User may drag and drop to rearrange, rotate photo, add/edit description, add/edit tags and location, remove photo or make a photo the cover photo for the album.

Only new items are annotated here. Any items not annotated can be assumed to inherit the default functionality described on page 9, Point A of this document.

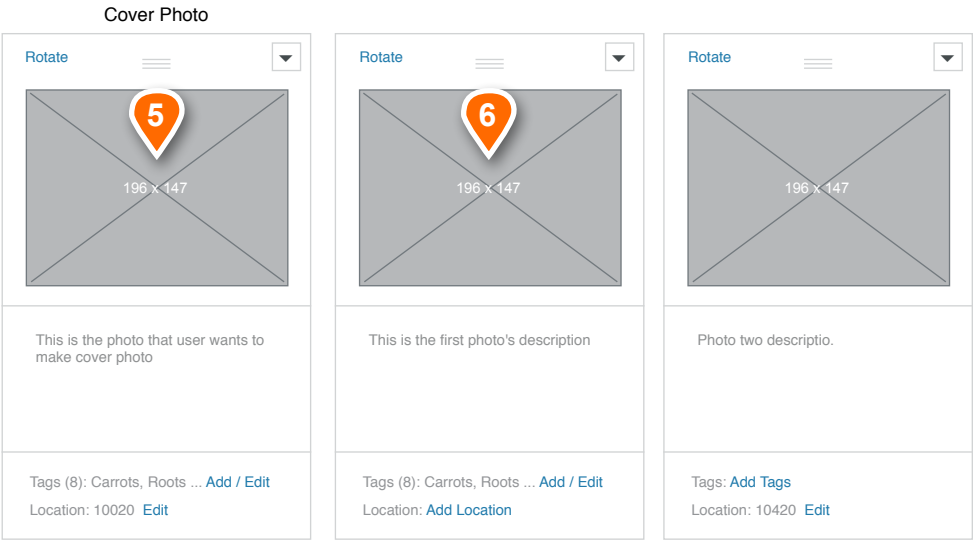
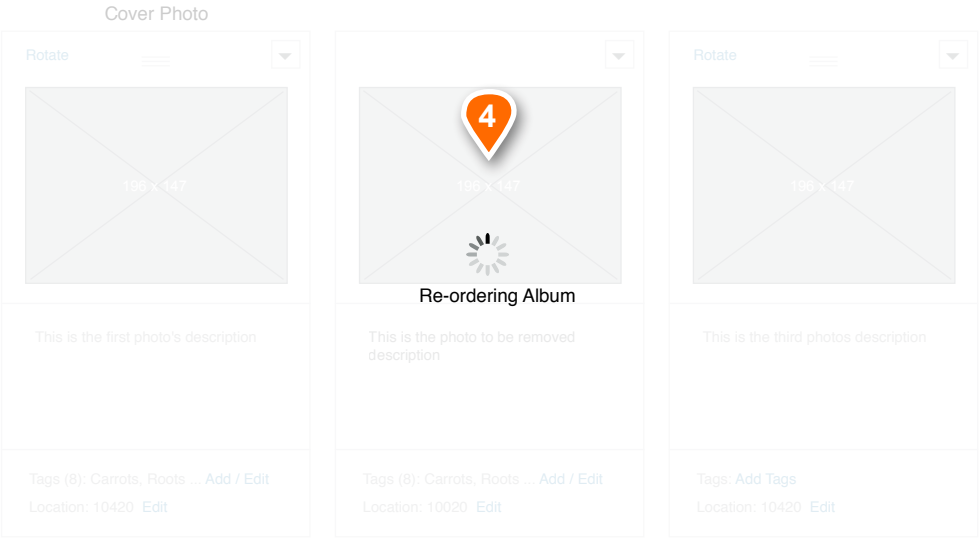
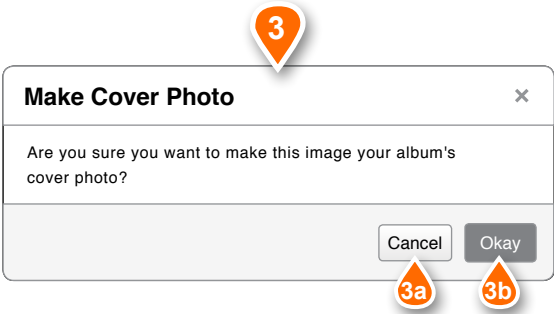
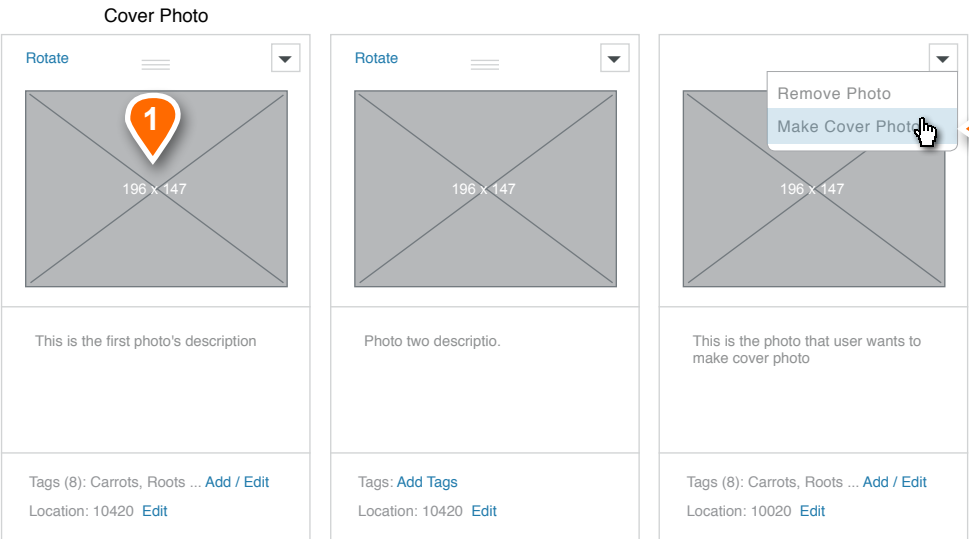
- 1 Updated Message Text: Task specific message text tailored to the current photo edit process.
- 2 Add More Photos Button: Spilt button that, on click, displays a select dropdown with options for selecting photo the upload source. Users may choose to upload photos from their computer, or select them from previously saved photos in their profile.
- 3 Remove Photos Button: Standard button that, on click, launches a delete confirmation modal. If accepted, all photos in the gallery are deleted, and the user is presented with the display shown on page 9 of this document - prompting them to upload more photos.
- 4 Message Text: Simple text instructing users that they may rearrange the photos by grabbing and dragging.
- 5 Cover Photo: Descriptive text denoting this first position photo as the album's cover photo. The cover photo is always shown in the first position of the grid.
- 6 Rotate Photo: On click of this text link, the photo is rotated 90° clockwise. User may continue to click if more rotation is desired. If need be, a loading graphic can show in the photo space until the photo rotation is completed.
- 7 Photo Cell Drag Handle: A graphical element denoting grab and drag capability for the photo cell. The grab area for the cell is anywhere in the photo area, and on the drag handle itself.
- 8 Additional Action Dropdown: Click of this icon will reveal a form select allowing the user to either delete the photo, or make this photo the cover photo for the album.
- 9 Photo Thumbnail: Standard 91x68 thumbnail of album photo.
 - a. Can Grab Indicator: On mouse over the photo thumbnail, the cursor will change to the can drag cursor. On click, the cursor will change to the grab cursor, the photo cell will highlight, and it can be dragged to a new position.
- 10 Photo Description: Standard form text area allowing users to type in a description. If photo being uploaded already has an attached description, it will display in this text area on page load. Description max char value 250. Text area will scroll to allow for longer descriptions.
- 11 Add Tag Link: If any of the album's photos do not have assigned tags, a text link will display here that, on click, invokes a modal sequence with the global tagging functionality described on Page 16.
- 12 Edit Tag Link: If an album photo currently has tags assigned, this area will show the number of total tags in parenthesis, and a comma delimited tag list that will be truncated after 14 characters with ellipses, and a text link to add/edit the tags. On click, this link invokes a modal sequence with the global tagging functionality described on Page 16.
- 13 Add Location Link: If any of the album's photos do not have an assigned location, a text link will display here that, on click, invokes a modal sequence that allows the user to add a Zip code location for the photo.
- 14 Edit Location Link: If an album photo currently has a location assigned, this area will show the current Zip code, followed by a text link to edit the zip code. On click, this link invokes a modal sequence that allows the user to add a Zip code location for the photo.
- 15 Add More Photos Cell: The last cell in the photo grid will always contain the add more photos functionality. On click of the Add Mote Photos button, the user will return user to step 3 on this page allowing them to select more files. Additional files are appended to the photo grid, but show before the Add More Photos Cell.
- 16 Photo With No Description: Photos with no description attached will display placeholder ghosted text in the form text area prompting the addition of an optional description. On text area click, the ghost text will disappear and be replaced by the type cursor.
- 17 Back Button: Simple button input that, on click, stores edits and photos in current state and returns user back to the about the album stage where they can edit that information.
- 18 Preview Button: Simple button that, on click, directs the user to the album preview page. See Page 19 for Preview Page.



Removing a Photo

This page of annotations provides a detailed view for removing a photo from the album during the creation process.

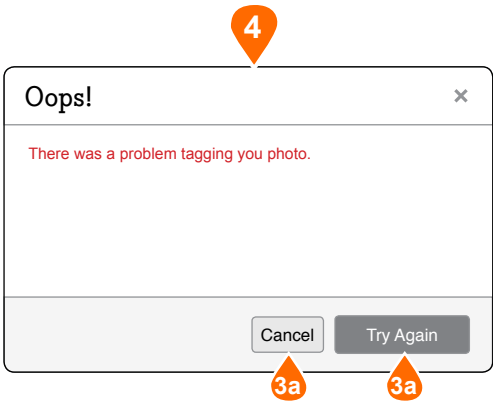
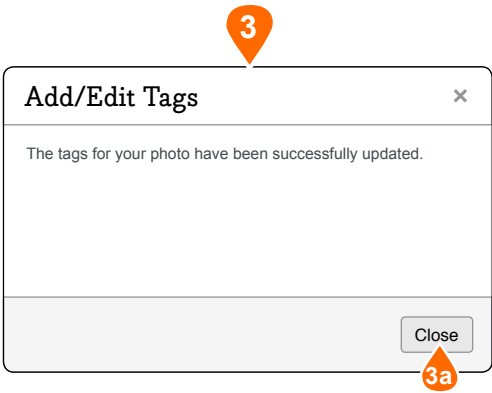
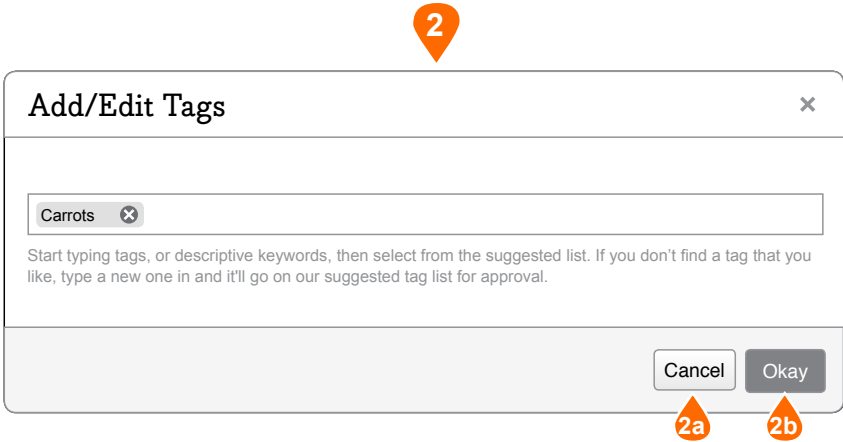
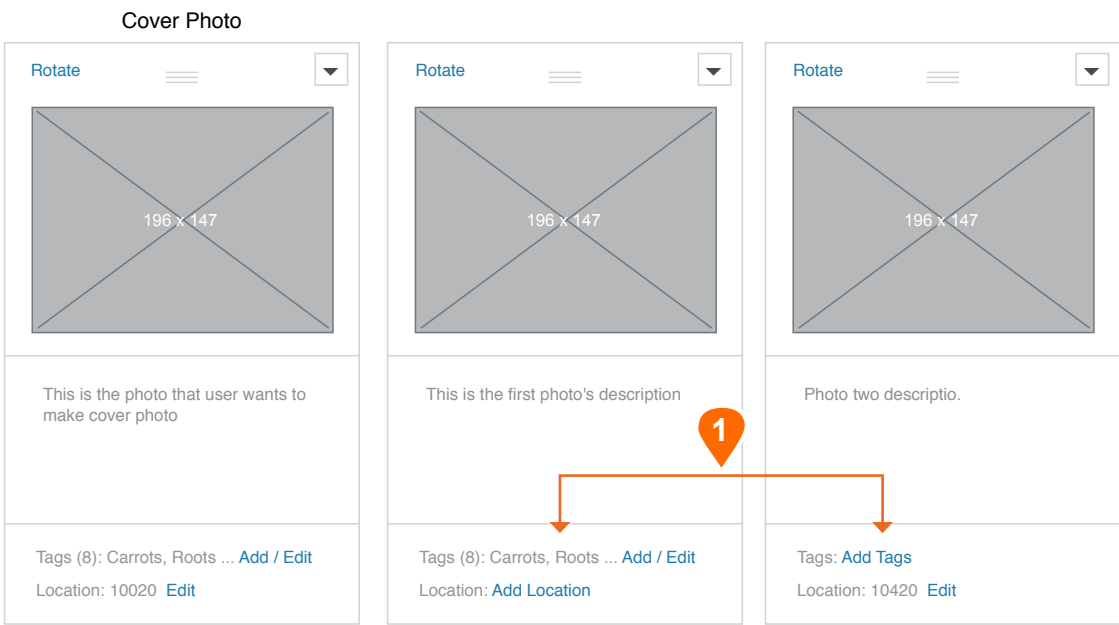
- 1 Remove Photo Select:** Use selects option to Remove Photo from the Additional Option dropdown. On select, the Remove Photo confirmation modal is invoked.
- 2 Remove Photo Confirmation Modal: Standard modal** invoked after dropdown option is selected.
 - a. Okay Button:** Standard button input that, on click, closes the modal window and initiates the photo removal action outlined in Point 3 below.
 - b. Cancel Button:** Standard button input that, on click, closed the modal with no further action being taken. No photos are removed.
- 3 Photo Removed Process Step:** Once user confirms that the selected photo is to be deleted, the photo quickly fades out of the grid (via AJAX) revealing a hole where the photo was.
- 4 Photo Removal Process Step:** After deleted photo completely fades out, the next photo in the grid (to the right) if it exists, slides into the now open position. Transition should be a quick, smooth animated slide. Time of the slide should be adjustable.
- 5 Process Complete:** Photo is removed, and subsequent photos have shifted over to fill any hole left in the process.



Make Cover Photo

This page of annotations provides flow and functionality for making a photo in the grid the album's cover photo via the additional action dropdown select.

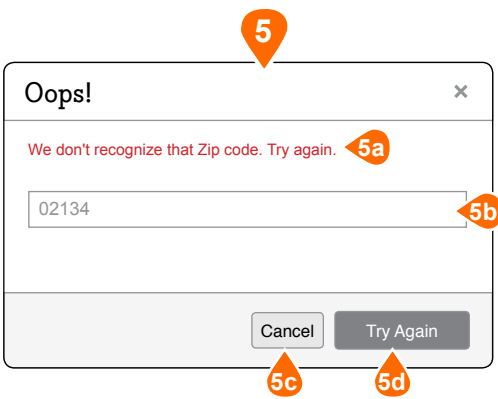
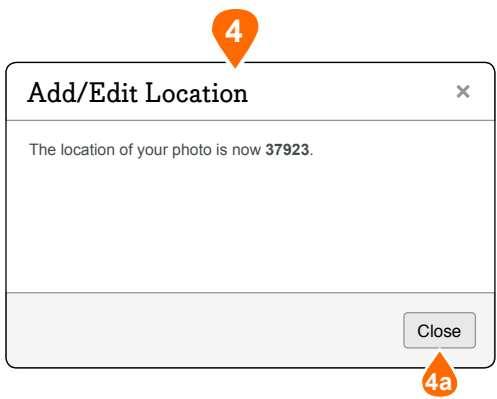
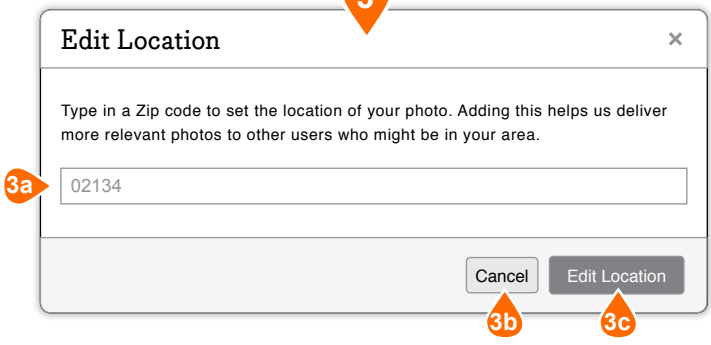
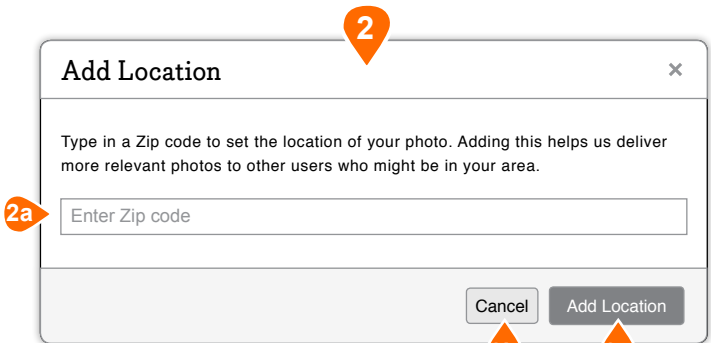
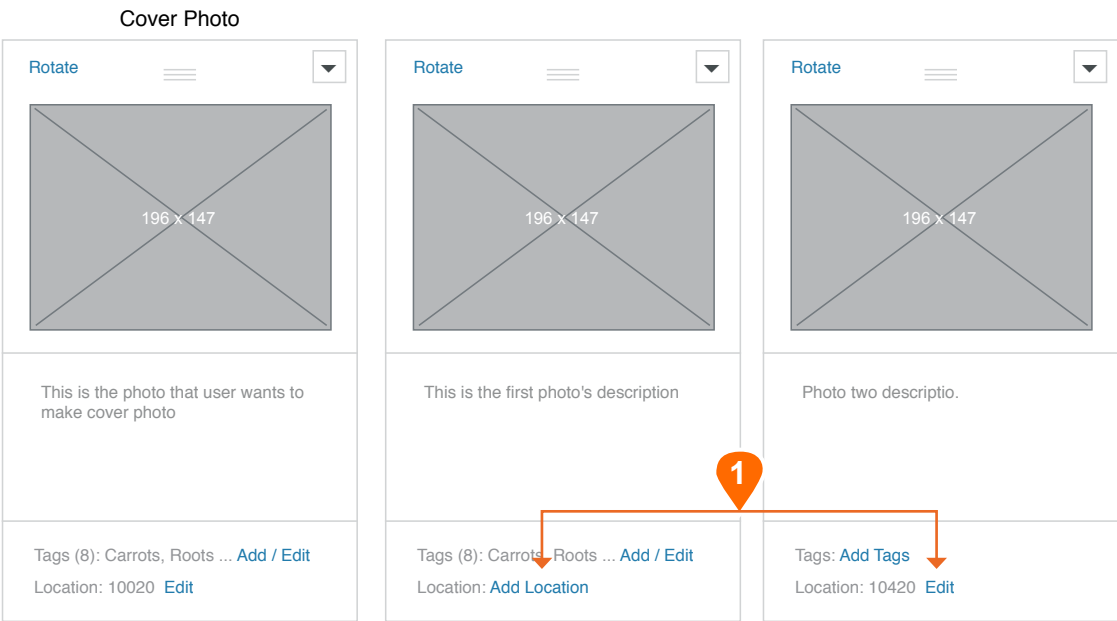
- Album's Current Cover Photo:** This is the album's current cover photo. By default, upon album creation, this image is either the first photo uploaded into the new album, or, the inspiration photo used for an album starter image.
- Make Cover Photo:** User selects the Make Cover Photo option in from the additional action dropdown select. On select, the Make Cover Photo confirmation modal is invoked.
 - Make Cover Photo Confirmation Modal:** Standard modal invoked after dropdown option is selected.
 - Cancel Button:** Standard button input that, on click, closes the modal with no further action being taken. No photos are reordered.
 - Okay Button:** Standard button input that, on click, closes the modal window and initiates the album reorder process required to move the newly selected cover photo into the first grid position..
- Album Reorder Process:** On click of the Okay Button in the confirmation modal, that modal closes and the album is reordered so that the newly selected cover photo is in the first position of the grid. All other photos in the grid will slide one position to the right to accommodate the newly positioned photo. During this process the grid will be ghosted, and a reordering album loading indicator will display.
- New Cover Photo in Place:** The newly selected cover photo is now in place.
- Photos moved to the right:** All other photos have shifted one position to the right in the grid..



Editing Photo Tags

This page outlines the add/edit tag functionality within the context of creating a photo album.

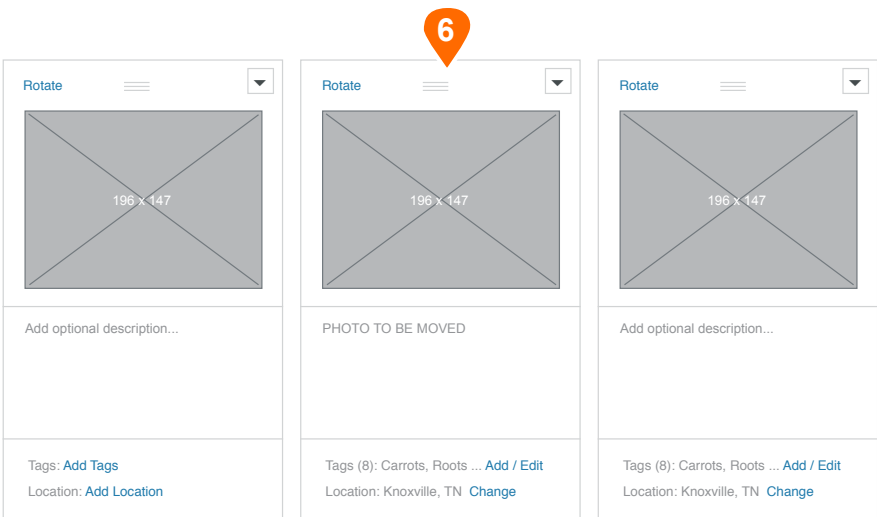
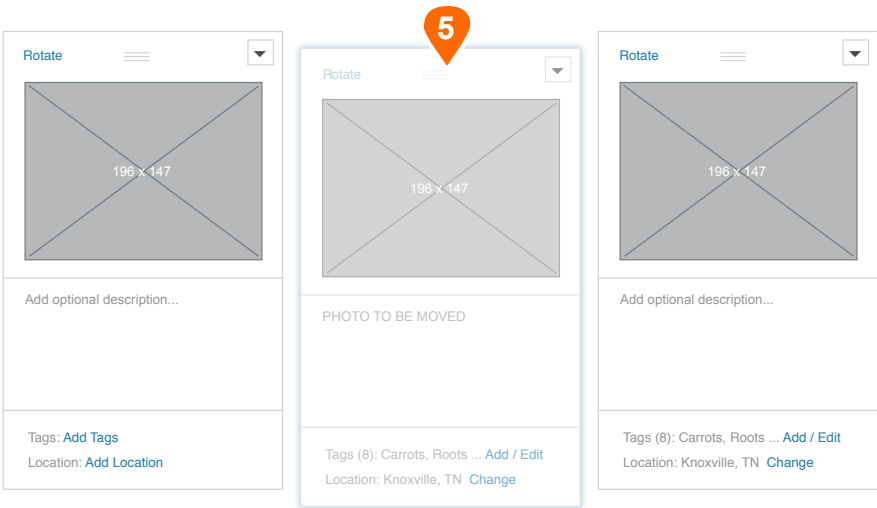
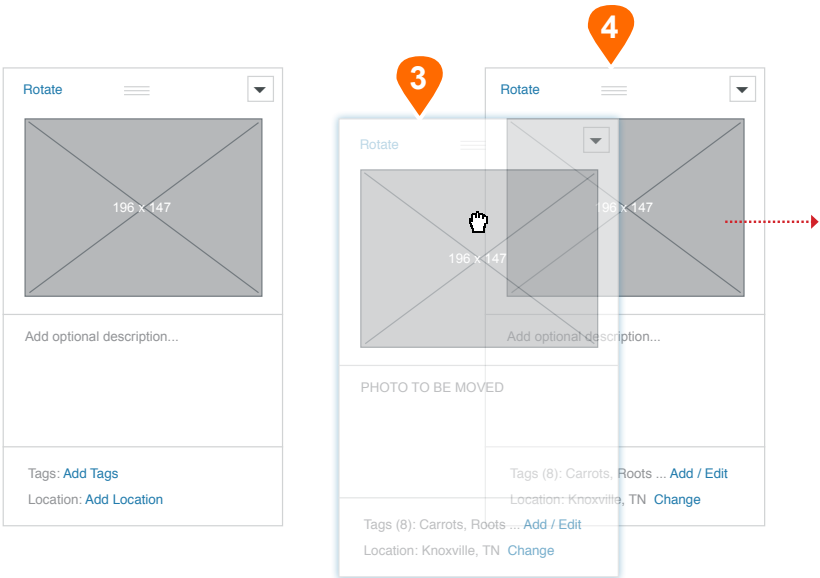
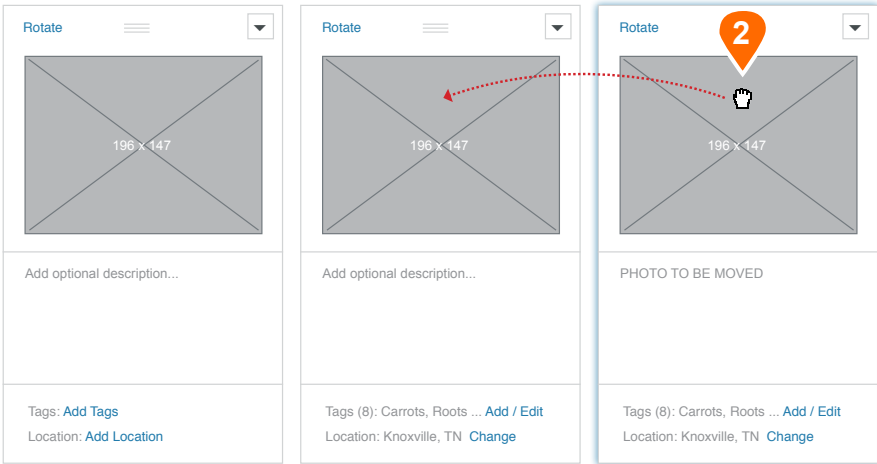
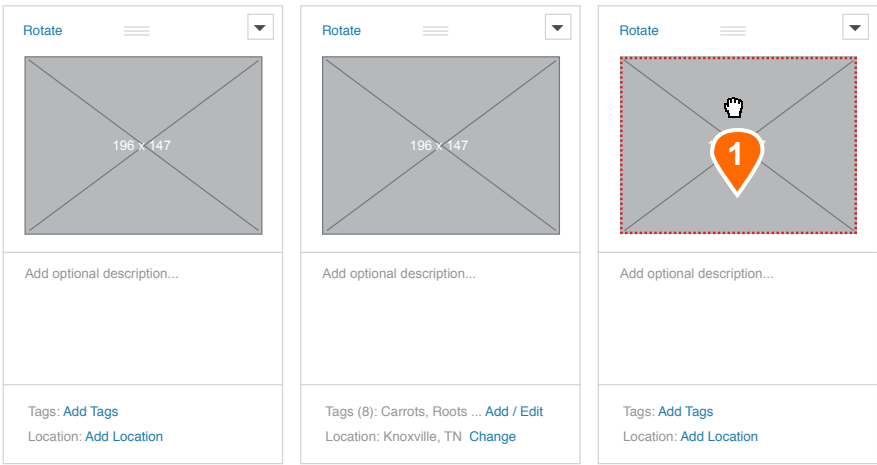
- Add/Edit Tag Links:** Text links that, on click, invoke the Add/Edit Tag modal experience.
- Add/Edit Tag Modal:** This modal is invoked via a click of either the Add Tags, or Add/Edit Tags links in any photo cell of the grid. *For this point, all functionality is as seen on page 7 of this document, except that it is in a modal window.*
 - Cancel Button:** On click, the modal closes with no further action being taken. No new tagging is applied.
 - Okay Button:** On click, either a success or error modal is displayed.
- Success Modal:** Standard modal with descriptive text letting the user know the tags have been successfully edited.
 - Close Button:** Standard input button that, on click, closes the modal window and ends the editing process.
- Error Modal:** If there is an issue saving the edited tags for the photo, an error modal will be invoked. This modal will include an appropriate error description as message text.
 - Cancel Button:** Standard input button that, on click, closes the modal with no further action being taken. The tag is not edited.
 - Try Again Button:** Standard input button that, on click, tries to save the edited photo again, returning user to Point 2 on this page to start the save sequence again.



Adding or Editing Location

This page outlines the add/edit location functionality within the context of creating a photo album.

- 1 Add/Edit Tag Links:** Text links that, on click, invoke the Add or Edit Tag modal experience, depending on whether or not the photo already has a location set.
- 2 Add Location Modal:** This modal is invoked via a click of the Add Location link in any photo cell of the grid.
 - a. Cancel Button:** On click, the modal closes with no further action being taken. No new location is applied.
 - b. Add Location Button:** On click, either a success or error modal is displayed.
- 3 Edit Location Modal:** This modal is invoked via a click of the Edit Location link in any photo cell of the grid.
 - a. Cancel Button:** On click, the modal closes with no further action being taken. No new location is applied.
 - b. Edit Location Button:** On click, either a success or error modal is displayed.
- 4 Success Modal:** Standard modal with descriptive text letting the user know the location has been successfully edited.
 - a. Close Button:** Standard input button that, on click, closes the modal window and ends the editing process.
- 5 Error Modal:** If there is an issue saving the location for the photo, an error modal will be invoked. This modal will include an appropriate error description as message text.
 - a. Error Message Text:** This is the message in the case that the user enters an invalid Zip code.
 - b. Text Input:** standard text input with incorrect Zip code as ghosted text. User may edit this text and change to new Zip code.
 - c. Cancel Button:** On click, the modal closes with no further action being taken. No new location is applied.
 - d. Try Again Button:** Standard input button that, on click, tries to save the edited zip again, returning user to Point 2 on this page to start the save sequence again.

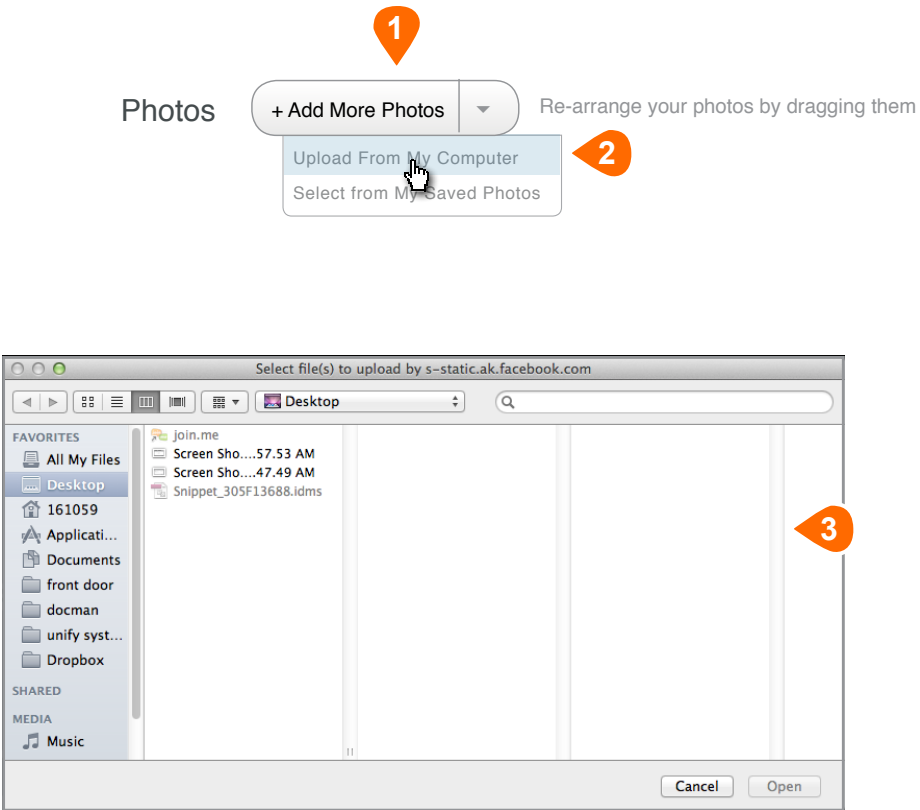


Reordering Photos in the Grid

This page outlines the functionality for the reordering of photos within the album creation grid. Our flow example is based on three photos, but the process applies for any number of photos, as long as there is more than one.

- 1 User Grabs Photo:** On mouse over any photo thumbnail, the cursor will change to the can drag cursor. On click, the cursor will change to the grab cursor, the photo cell will highlight, and it can be dragged to a new position. The valid grab area for the photo cell is the thumbnail area and the drag handle itself. The red dotted line just indicates valid grab zone for annotation purposes and is not a visual cue to the user.
- 2 Dragging:** On grab, the entire photo cell will highlight and become partially translucent, giving the appearance that the grabbed photo is floating above the other content on the page. User then may drag photo in any direction.
- 3 Drop Target Zones:** When a dragged photo enters a valid grid drop zone (in between photos in the grid) the drop zone will open up indicating the user may release the held photo.
- 4 Photo Displacement:** Displaced photos snap over one place to the right into the next grid space, pushing all photos after it over by one.
- 5 Grabbed Photo Release:** On release of the grabbed photo, the photo will snap into its place in the grid, and slowly fade back to 100% opacity.
- 6 Photo Reorder Complete:** Photos are now reordered and process may begin again.

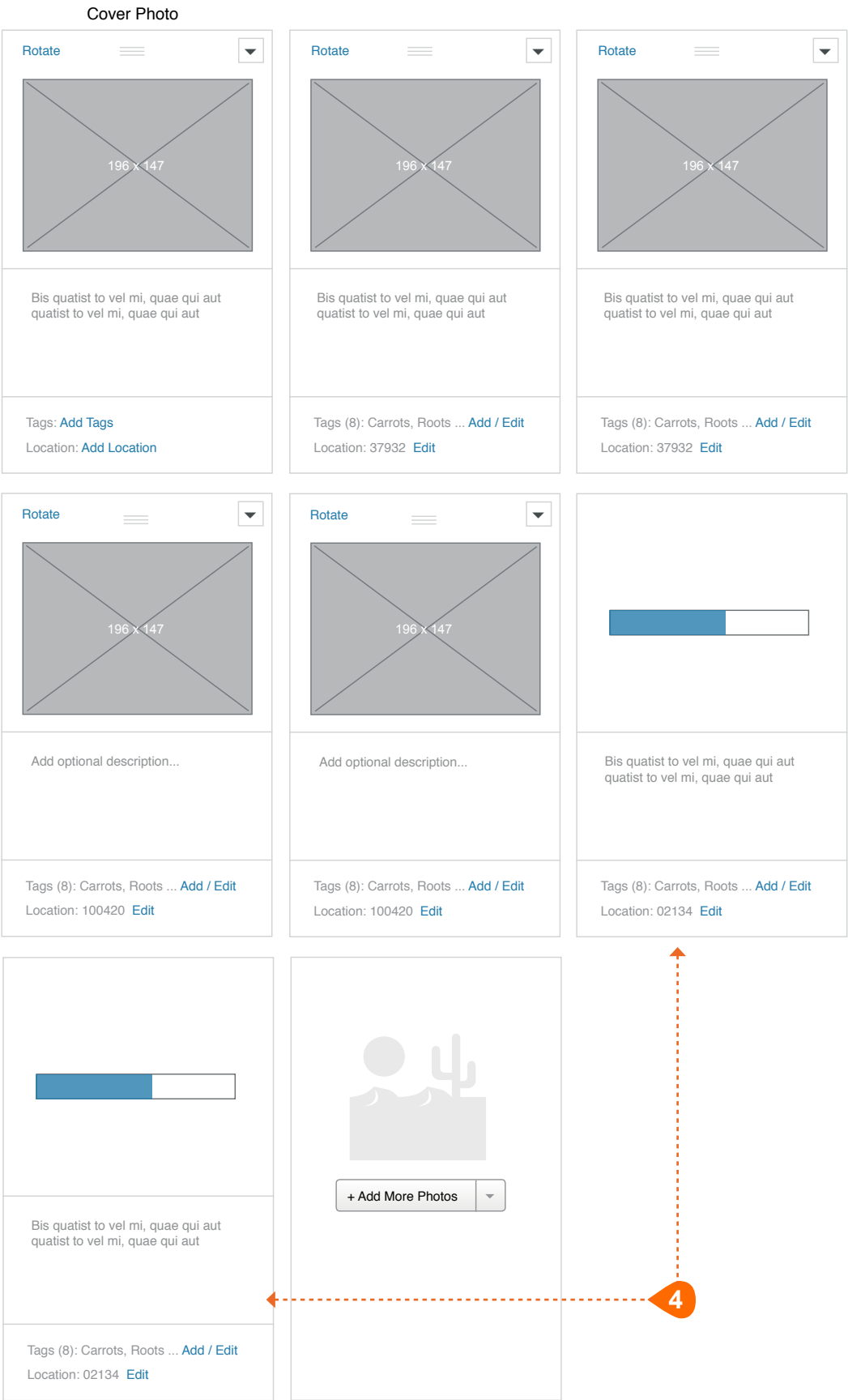
NOTE: If a user grabs a photo and releases before entering another valid drop zone, the photo will snap back into its original space.

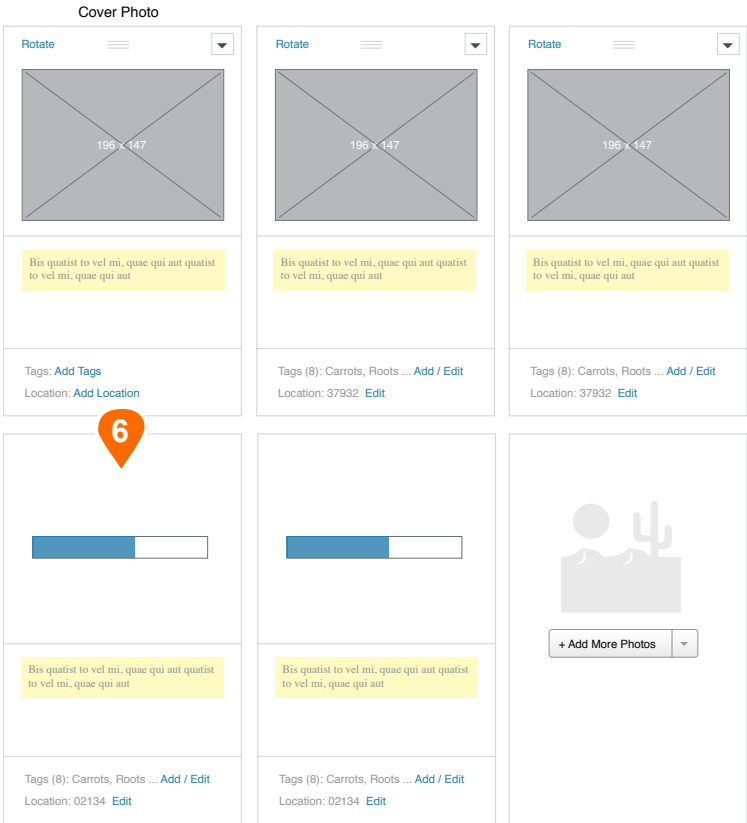
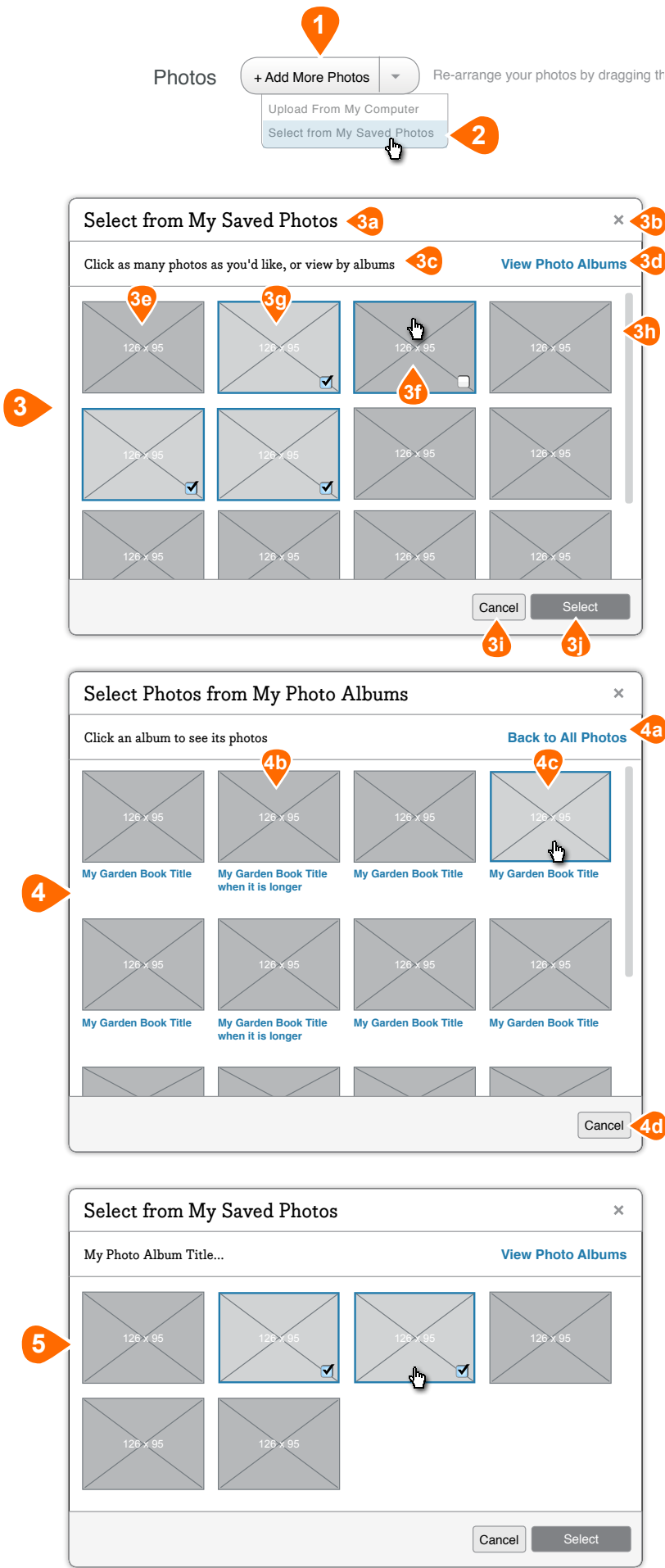


Uploading from Computer

- 1 **Upload Button:** Spilt button that, on click, displays a select dropdown with options for selecting photo the upload source.
- 2 **Select Dropdown:** User chooses to upload images from computer
- 3 **OS File Select Menu:** Selection of the 'Upload From My Computer' option will launch the standard OS file select window. The user may then select a single or multiple (Ctrl+Click or Cmd+Click) images for upload. Clicking on the "Open" button on the OS window will begin the actual upload process.
- 4 **New Photos Added to Grid:** The newly uploaded photos are appended at the end of the photo grid, but before the Add More Photos cell.

Photos shown here are in the process of uploading. Photos still in the upload process will display a status bar to monitor upload progress. Photos in upload process are not able to be interacted with until upload is complete. At that time, uploaded photos function as normal.





Selecting from Saved Photos

This selection is only available if the user has saved or uploaded photos into their profile. It is suppressed otherwise.

- 1 Upload Button:** Spilt button that, on click, displays a select dropdown with options for selecting photo the upload source.
- 2 Select Dropdown:** User chooses to upload from photos saved to their HGTVGardens profile. This selection is only available if the user has saved or uploaded photos into their profile. On select, the Select from My Saved Photos modal experience is initiated.

- 3 Select from My Saved Photos Modal:** On dropdown menu select, this modal is opened and users may select photos saved to their profiles to add to this album. The thumbnails are arranged in a four-across grid that may be scrolled inside the modal window.

- a. Modal Title:** Standard modal text title
- b. Modal Close:** On click of this icon, the modal window closes with no further action taking place. No checkbox selected photos are saved, and any selected are forgotten by the system.
- c. Message Text:** Simple message text
- d. View Photo Album Link:** Text link that, on click, closes the Select from Photos modal and opens the Select from Photo Albums modal where the user will be able to select a photo album to choose photos from. *See Point 4*

Note: There should be a noticeable transition between the closing on one modal and the opening of the other because the contents of each modal appear very similar. The first modal should fade out and the second modal should fade in. Fades should be quick and smooth. Decay and load time will need to be adjustable.

- e. Photo Thumbnail:** Standard 126x95 thumbnail. The grid will contain all photos the user has saved or uploaded into their profile.
- f. Thumbnail Hover State:** On mouse over any of the thumbnails in the grid, the photo will highlight and a select checkbox will appear as an overlay, allowing the user to select this photo to add to their album.
- g. Selected Photo Thumbnail:** Any photos selected via the checkbox will show as highlighted, and the selected checkbox will remain visible overlaid on the photo. Any selected photos may be deselected. Once deselected, the photo returns to the visual state shown in point 3e.
- h. Modal Scrollbar:** The modal is a fixed height with a photo viewing area sized to display part of the third row of photos. If a third row of photos exists (or more) a system scrollbar will appear to allow the user to browse the entire grid.
- i. Cancel Button:** On click of this button, the modal window closes with no further action taking place. No checkbox selected photos are saved, and any selected are forgotten by the system.
- j. Select Button:** Standard button input that, on click, adds the selected photos to the user's album.

- 4 Select from My Photo Albums Modal:** On click of the View Photo Albums Link (*Point 3d*), this modal is opened and users may select an album to narrow their photo selection by. The album thumbnails are arranged in a four-across grid that may be scrolled inside the modal window.

NOTE: Any functionality not specifically annotated in this modal is identical to the modal outlined in Point 3.

- a. Back to All Photos Link:** Text link that, on click, closes the Select from Photo Albums modal and opens the Select from My Saved Photos modal. *See Point 3*

Note: There should be a noticeable transition between the closing on one modal and the opening of the other because the contents of each modal appear very similar. The first modal should fade out and the second modal should fade in. Fades should be quick and smooth. Decay and load time will need to be adjustable.

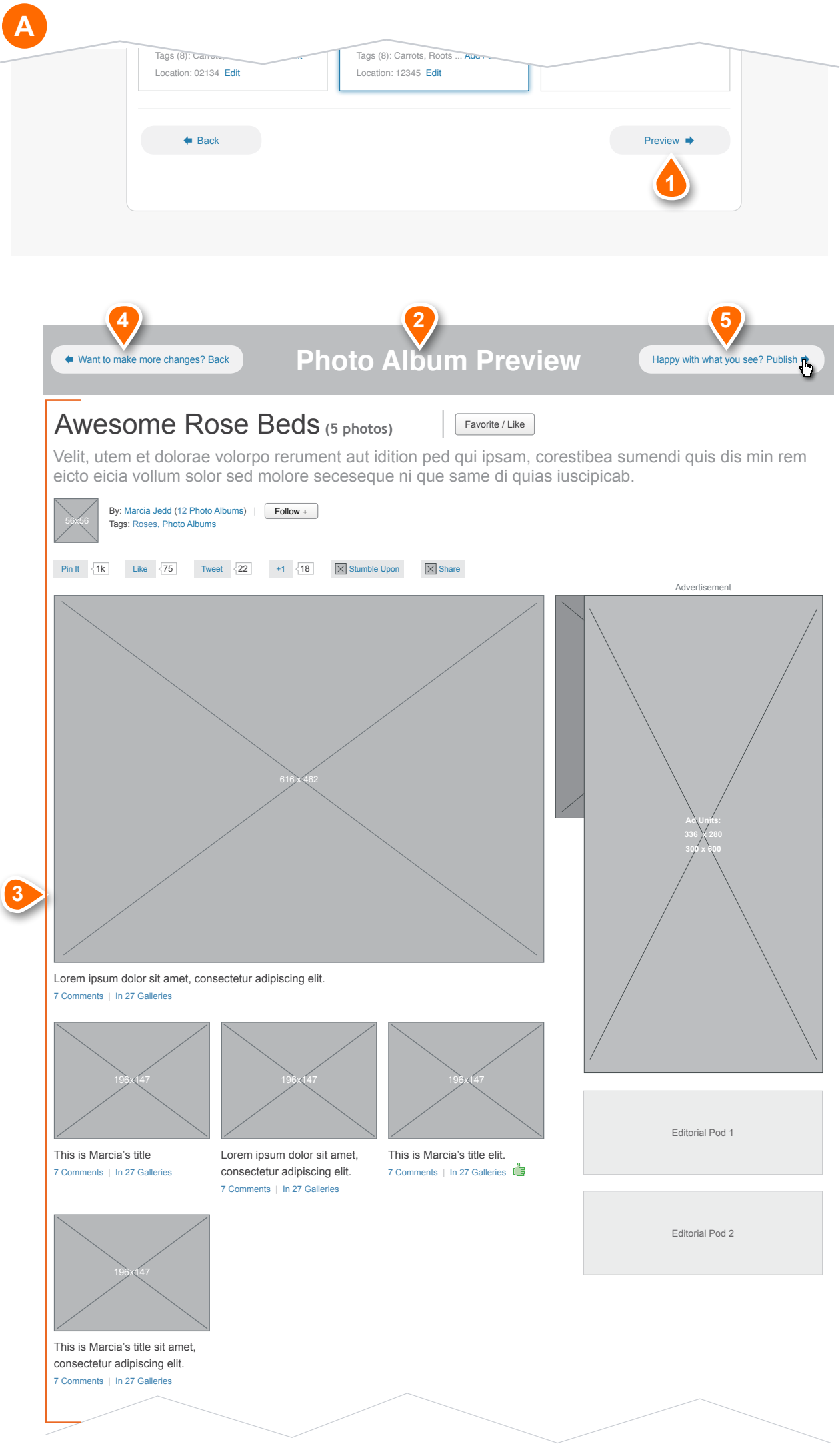
- b. Album Thumbnail:** Standard 126x95 thumbnail of the album's cover photo, followed by a text link of the album's title. Both, on click, select the album, close this modal, and opens the Album Specific Photo Select modal where the user may select individual photos from the selected album.
- c. Thumbnail Hover:** On mouse over, the thumbnail should highlight to show interactivity.
- d. Cancel Button:** On click of this button, the modal window closes with no further action taking place. No checkbox selected photos are saved, and any selected are forgotten by the system.

- 5 Select from My Saved Photos (Album Specific) Modal:** This modal only displays photos from the album selected in *Point 4*. All other modal functionality is identical to as outlined in *Point 3*.

NOTE: Any functionality not specifically annotated in this modal is identical to the modal outlined in Point 3.

- 6 New Photos Added to Grid:** The newly added photos are appended at the end of the photo grid, but before the Add More Photos cell.

Photos shown here are in the process of uploading. Photos still in the upload process will display a status bar to monitor upload progress. Photos in upload process are not able to be interacted with until upload is complete. At that time, uploaded photos function as normal.



A. Previewing Photo Album

The user is presented with a simple preview for their photo album before publishing the album. User arrives at preview page via clicking on the Preview Button on the album photo upload page (page 7).

The preview page itself, is a simple page with a minimized header and no right rail of its own - only that which belongs to the album being previewed itself.

1 Preview Button: Simple button that, on click, directs the user to the album preview page.

2 Album Preview - Title and Header: A simple page header that includes a text title identifying this page as a preview page and providing buttons to publish the album, or go back and edit more

3 Album Preview Area: This page area displays a preview of the album does NOT include the album page's header and footer - Just the content area and right rail.

NOTE: Ideally, none of the links or buttons in the preview area will be active because we do not want to send the user off the page and away from the album creation process.. If interactivity on preview process cannot be suppressed, all links in the preview area should open in a new window.

4 Back Button: Large button with detailed messaging text that, on click, directs user back a page in the album creation process to the Photo Upload and Management Page.

5 Publish Button: Large button with detailed messaging text that, on click, publishes the photo album and directs the user to the photo album detail page. If error during the publish process, the preview page will reload and display an error message below the preview header.

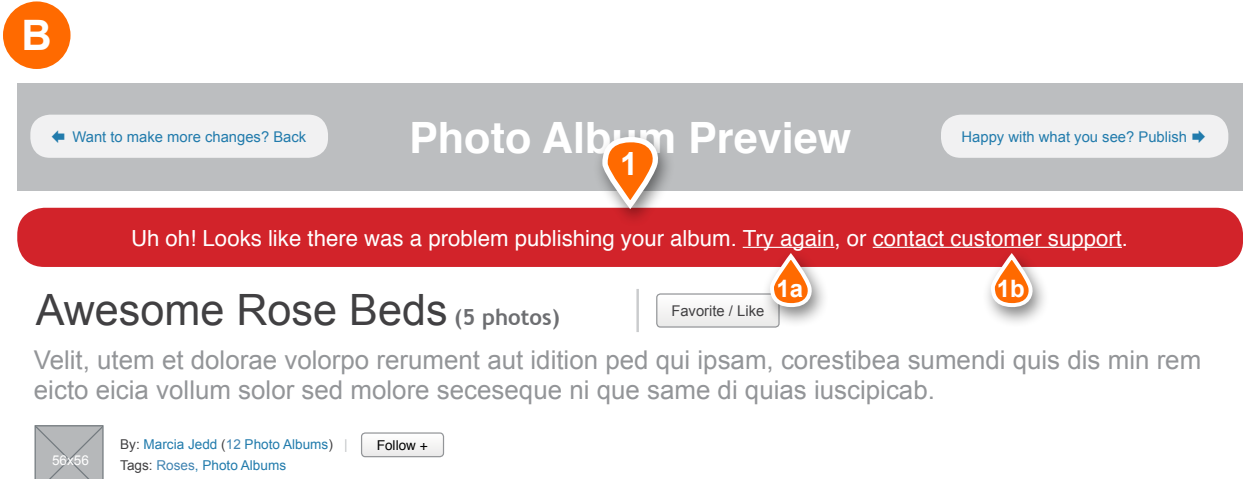
NOTE: The album page for a viewer looking at their own album will display an "Edit Photo Album" Button at the top that, on click, initiates the album edit process.

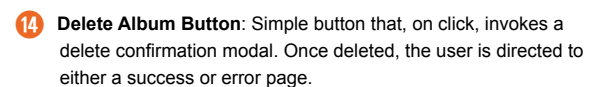
B. Album Publish Error

1 Error Message: If error during the publish process, the preview page will reload and display an error message below the preview header.

a. Try Again Link: On click, resubmits edited album for save. Either it will publish the album and direct the user to the album detail page, or, again, display the error.

b. Email Link: On click, opens the user's default email client, pre-populating the address field with the support email address. It should be coded so that the subject line is populated with," Help! Problem Saving Edited Photo Album."





A

Title

Awesome Rose Beds Typ |

You have 20 characters left

1

2

Title

Awesome Rose Beds Typnserit is voluptatio. Optatio tem hic te nemporest

You have 0 characters left

3

A. Album Title

- Required field. The current title of the album being edited is pre-populated here. User has option to edit. This text area has a max character count of 200 characters.
- 1

Text Area Active State: On click inside of text input area, the area will highlight and available character value (200) will be displayed in the form of a character counter.
- 2

Available Character Count: User has started typing text - the number descends by one for each keystroke. Removing characters increases available count by one for every keystroke.
- 3

Character Count Reached: Messaging text alerting the user that they have reached the max character count allowed for the text input area. Once the max value is reached, the user will not be allowed to type any more characters in the field until characters are deleted and the available count is less than the max value.

B

Description

Moluptae cumquam raererferit enim num abo. Aciae ius ea nes diatusa menimporpor sum dendita il mod qui dolupta con ra quasped ma iusdandest archill uptatusam cullaborae.

You have 150 characters left

///

Description

Moluptae cumquam raererferit enim num abo. Aciae ius ea nes diatusa menimporpor sum dendita il mod qui dolupta con ra quasped ma iusdandest archill uptatusam cullaborae lautemque quossim que dolorat quibusa pos non nobit lam, torero incienimi, te volorecum quos error audit faccab ius abore cum ut.

You have 0 characters left

///

B. Album Description

- Optional field. Simple text area where user may enter additional information about the question to be submitted. Max character count is TBD (1024 chars?).
- 1

Text Area Active State: On click inside of text input area, the area will highlight and available character value (1024) will be displayed in the form of a character counter.
- 2

Available Character Count: User has started typing text - the number descends by one for each keystroke. Removing characters increases available count by one for every keystroke.
- 3

Character Count Reached: Messaging text alerting the user that they have reached the max character count allowed for the text input area. Once the max value is reached, the user will not be allowed to type any more characters in the field until characters are deleted and the available count is less than the max value.

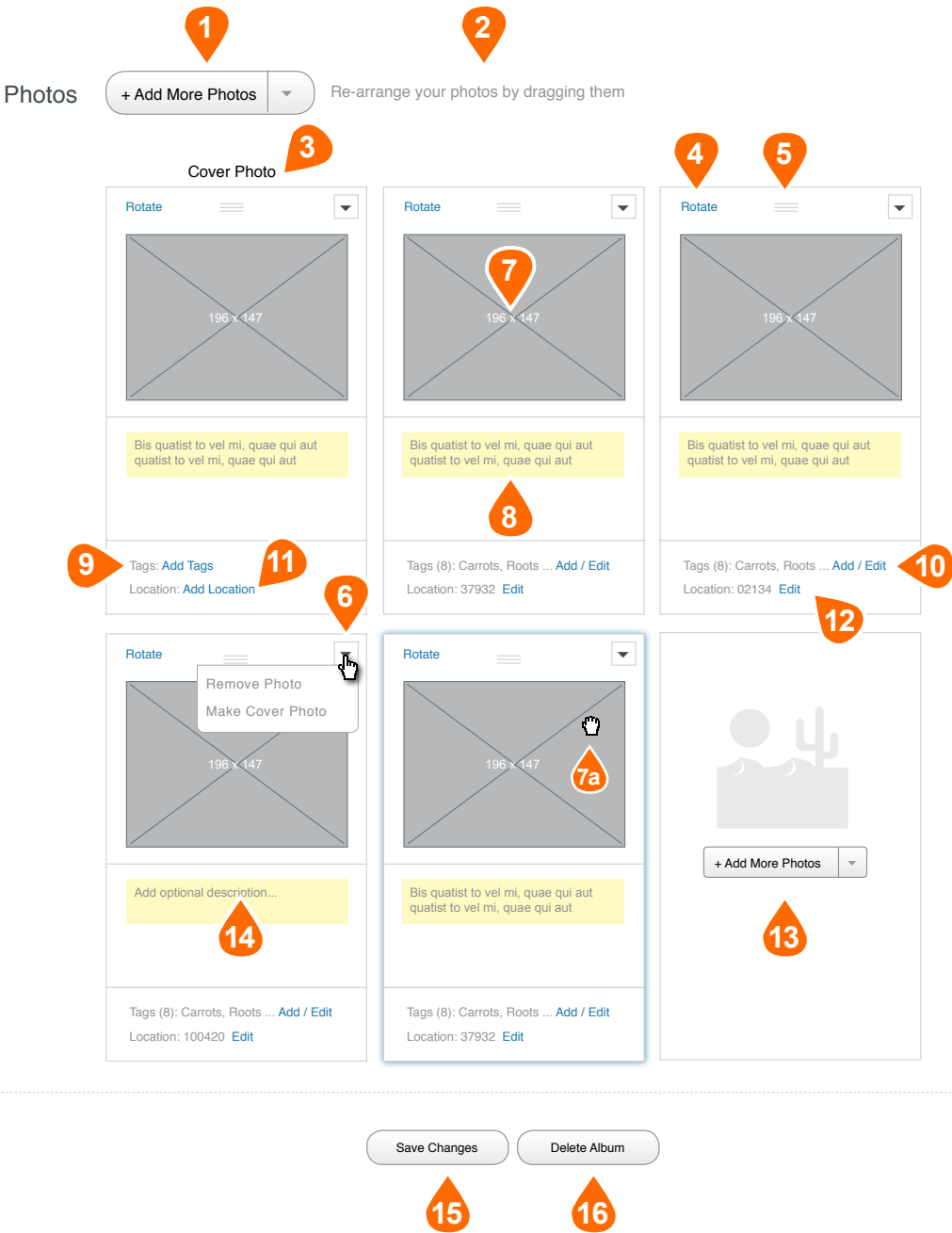


Photo Grid Overview

This page of annotations provides an overview about the photo grid display shown on the album edit page. All photos in the grid are pre-populated on page load since they are already assigned to the album.

Uploaded photos are displayed in a 3 across grid, and will be, by default, ordered in the order they were when the album was last saved.

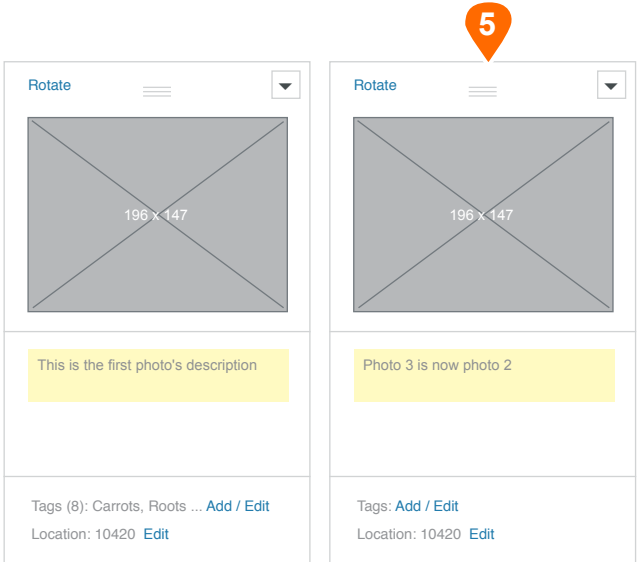
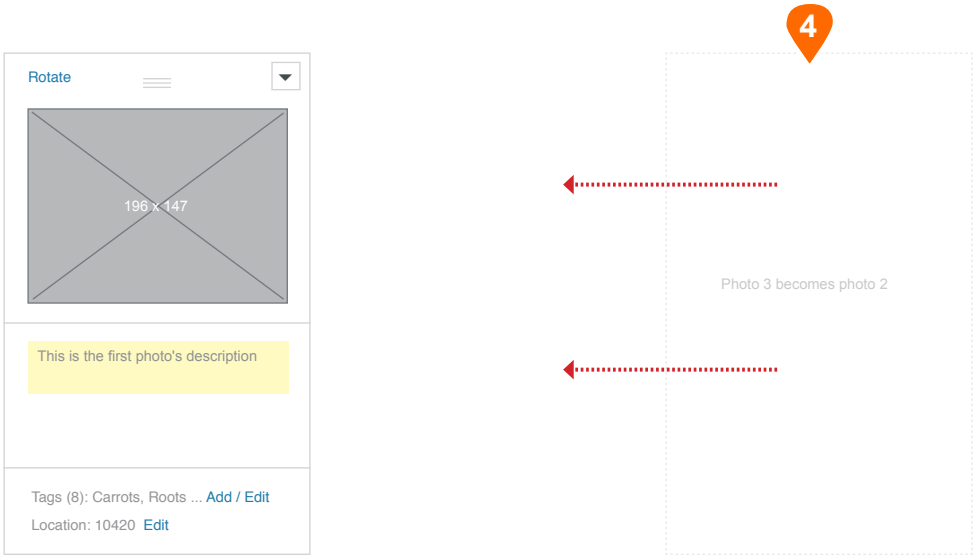
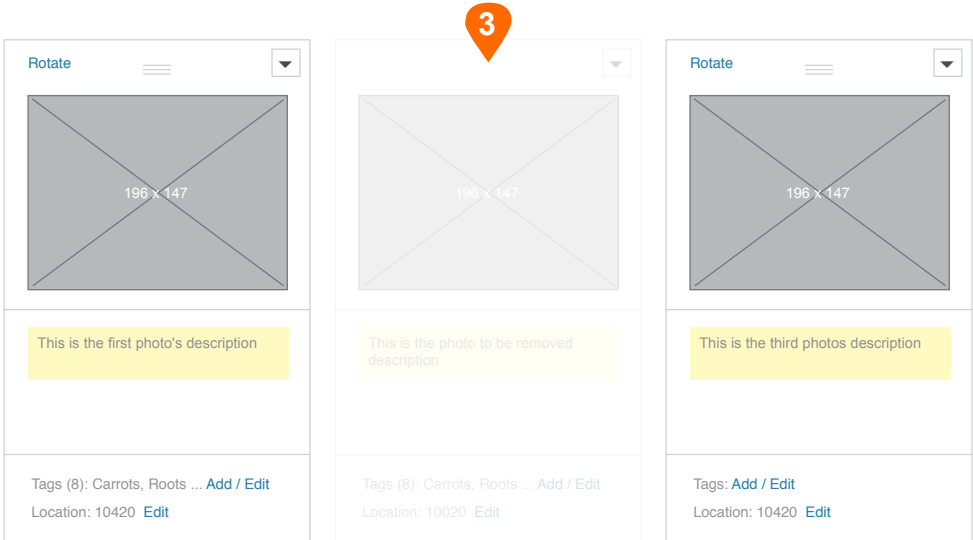
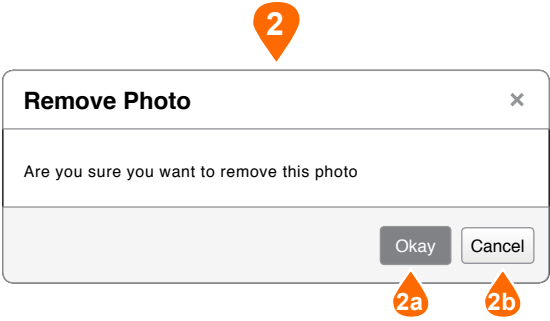
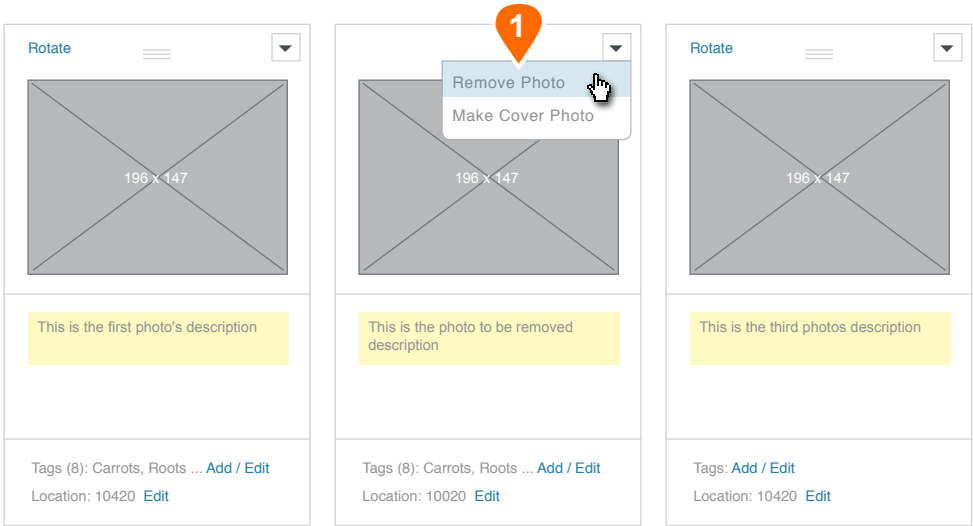
Although these annotations jump from cell to cell, each photo cell has the exact same functionality. Display just depends on photo properties.

- 1 Add More Photos Button:** Split button that, on click, displays a select dropdown with options for selecting photo the upload source. Users may choose to upload photos from their computer, or select them from previously saved photos in their profile. *See page 28 for more details*
- 2 Message Text:** Simple text instructing users that they may rearrange the photos by grabbing and dragging.
- 3 Cover Photo:** Descriptive text denoting this first position photo as the album's cover photo. The cover photo is always shown in the first position of the grid.
- 4 Rotate Photo:** On click of this text link, the photo is rotated 45° clockwise. User may continue to click if more rotation is desired. If need be, a loading graphic can show in the photo space until the photo rotation is completed.
- 5 Photo Cell Drag Handle:** A graphical element denoting grab and drag capability for the photo cell. The grab area for the cell is anywhere in the photo area, and on the drag handle itself.
- 6 Additional Action Dropdown:** Click of this icon will reveal a form select allowing the user to either delete the photo, or make this photo the cover photo for the album.
- 7 Photo Thumbnail:** Standard 91x68 thumbnail of album photo.
 - a. Can Grab Indicator:** On mouse over the photo thumbnail, the cursor will change to the can drag cursor. On click, the cursor will change to the grab cursor, the photo cell will highlight, and it can be dragged to a new position.
- 8 Photo Description:** Standard form text area allowing users to type in a description. If photo being edited already has an attached description, it will display in this text area on page load. This text area is highlighted to denote it may be edited. Description max char value 1024? Text area will scroll to allow for longer descriptions.
- 9 Add Tag Link:** If any of the album's photos do not have assigned tags, a text link will display here that, on click, invokes a modal sequence with the global tagging functionality described on Page 16.
- 10 Edit Tag Link:** If an album photo currently has tags assigned, this area will show the number of total tags in parenthesis, and a comma delimited tag list that will be truncated after 14 characters with ellipses, and a text link to add/edit the tags. On click, this link invokes a modal sequence with the global tagging functionality described on Page 16.
- 11 Add Location Link:** If any of the album's photos do not have an assigned location, a text link will display here that, on click, invokes a modal sequence that allows the user to add a Zip code location for the photo.
- 12 Edit Location Link:** If an album photo currently has a location assigned, this area will show the current Zip code, followed by a text link to edit the zip code. On click, this link invokes a modal sequence that allows the user to add a Zip code location for the photo.
- 13 Add More Photos Cell:** The last cell in the photo grid will always contain the add more photos functionality. On click of the Add Mote Photos button, the user will return user to step 3 on this page allowing them to select more files. Additional files are appended to the photo grid, but show before the Add More Photos Cell.
- 14 Photo With No Description:** Photos with no description attached will display placeholder ghosted text in the form text area prompting the addition of an optional description. On text area click, the ghost text will disappear and be replaced by the type cursor.
- 15 Save Changes Button:** Simple button input that, on click, saves all changes to the album and directs user to either a success or error page.
- 16 Delete Album Button:** Simple button that, on click, invokes a delete confirmation modal. Once deleted, the user is directed to either a success or error page.

SEO NOTES:

-- Use photo description as ALT tag.

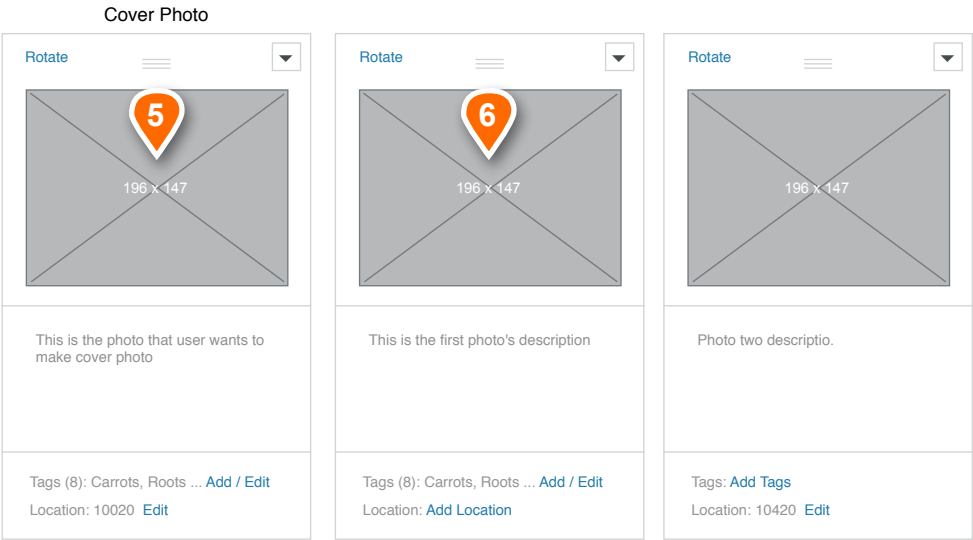
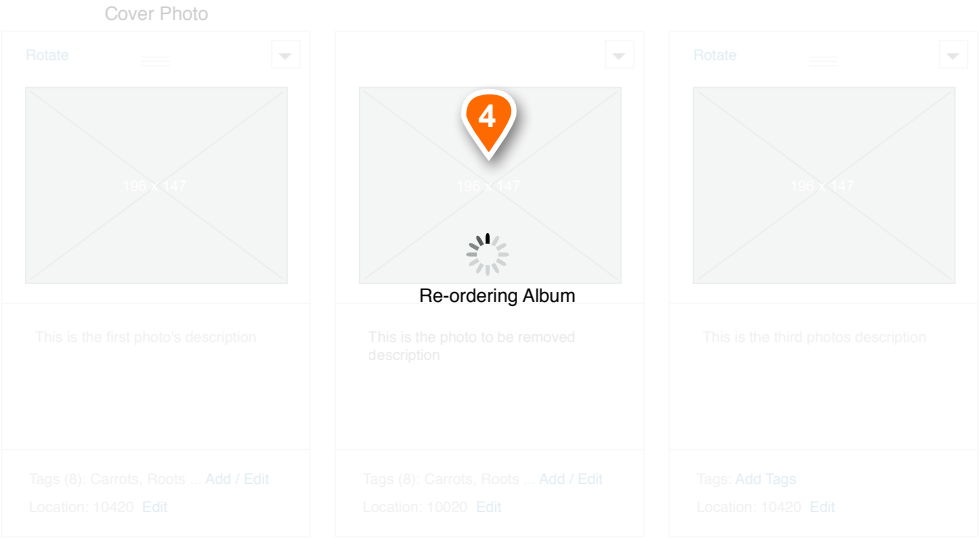
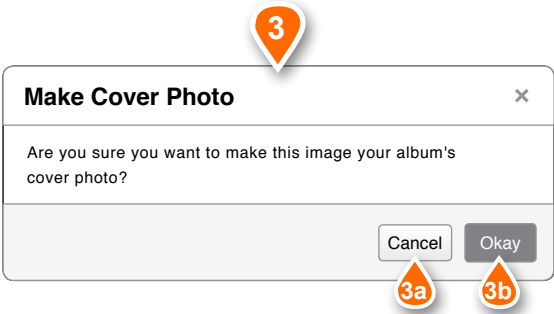
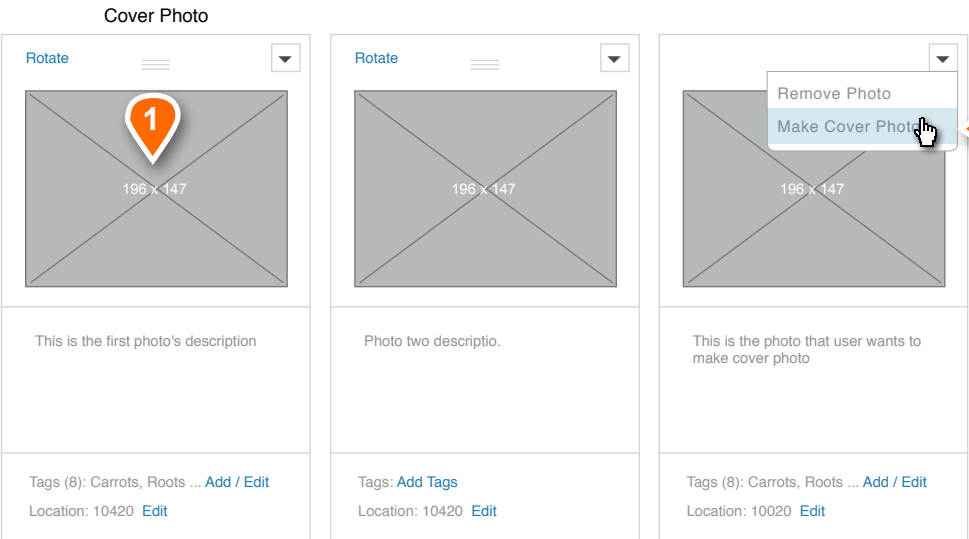
-- All images should have ALT tags.



Removing a Photo

This page of annotations provides a detailed view for removing a photo from the album being edited.

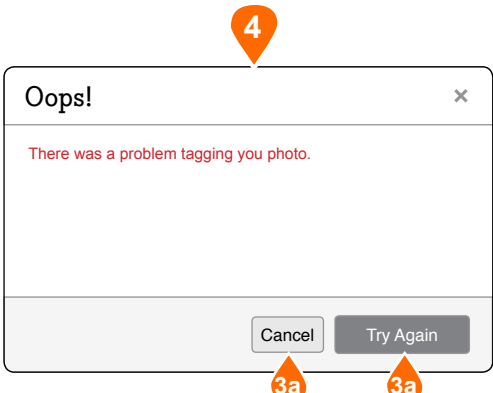
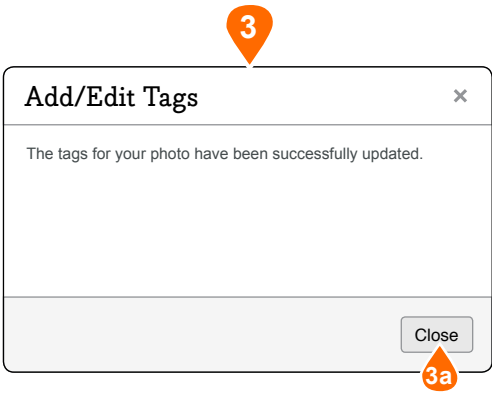
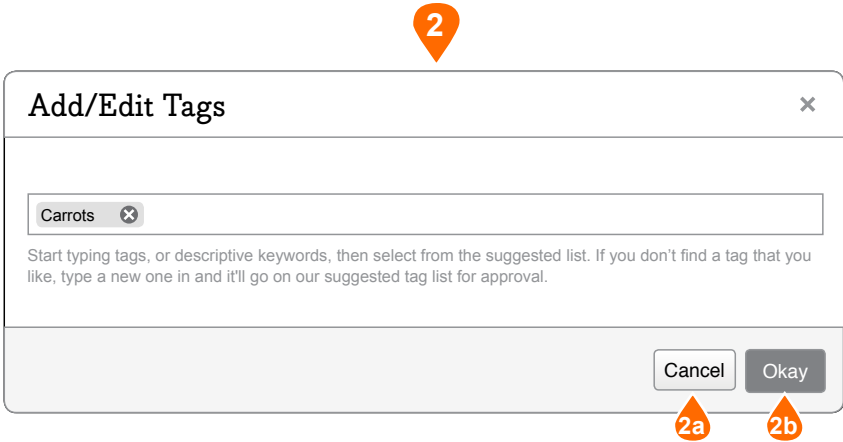
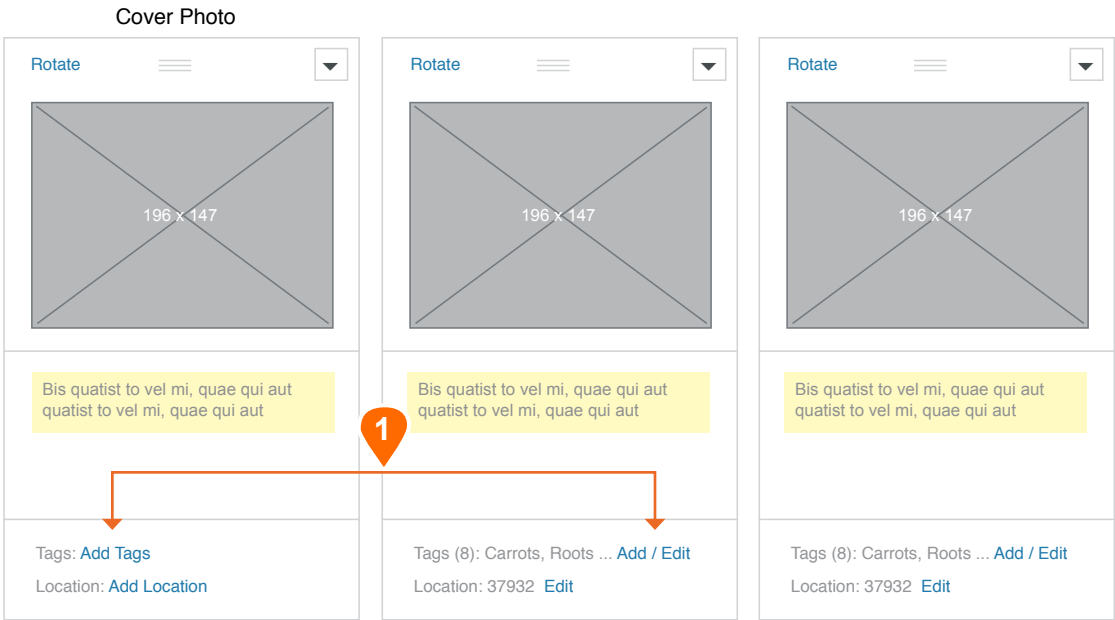
- 1 Remove Photo Select:** Use selects option to Remove Photo from the Additional Option dropdown. On select, the Remove Photo confirmation modal is invoked.
- 2 Remove Photo Confirmation Modal: Standard modal** invoked after dropdown option is selected.
 - a. Okay Button:** Standard button input that, on click, closes the modal window and initiates the photo removal action outlined in Point 3 below.
 - b. Cancel Button:** Standard button input that, on click, closed the modal with no further action being taken. No photos are removed.
- 3 Photo Removed Process Step:** Once user confirms that the selected photo id to be deleted, the photo quickly fades out (via AJAX) revealing a hole where the photo was.
- 4 Photo Removal Process Step:** After deleted photo completely fades out, the next photo in the grid (to the right) if it exists, slides into the now open position. Transition should be a quick, smooth animated slide. Time of the slide should be adjustable.
- 5 Process Complete:** Photo is removed, and subsequent photos have shifted over to fill any hole left in the process.



Make Cover Photo

This page of annotations provides flow and functionality for making a photo in the grid the album's cover photo via the additional action dropdown select.

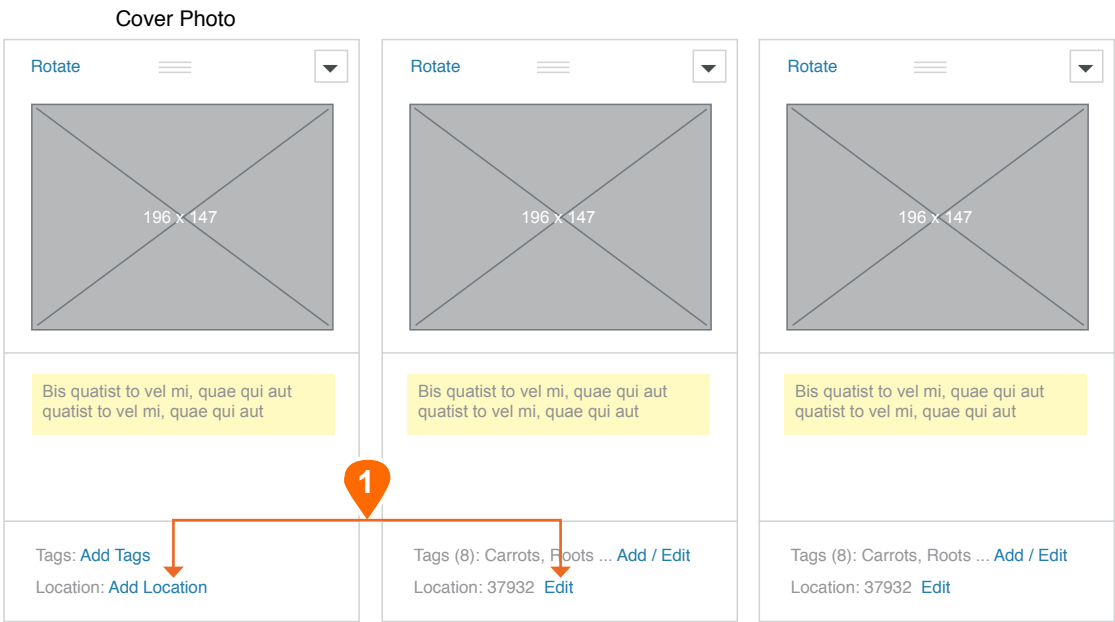
- 1 Album's Current Cover Photo:** This is the album's current cover photo. By default, upon album creation, this image is either the first photo uploaded into the new album, or, the inspiration photo used for an album starter image.
- 2 Make Cover Photo:** User selects the Make Cover Photo option in from the additional action dropdown select. On select, the Make Cover Photo confirmation modal is invoked.
- 3 Make Cover Photo Confirmation Modal:** Standard modal invoked after dropdown option is selected.
 - a. Cancel Button:** Standard button input that, on click, closes the modal with no further action being taken. No photos are reordered.
 - b. Okay Button:** Standard button input that, on click, closes the modal window and initiates the album reorder process required to move the newly selected cover photo into the first grid position..
- 4 Album Reorder Process:** On click of the Okay Button in the confirmation modal, that modal closes and the album is reordered so that the newly selected cover photo is in the first position of the grid. All other photos in the grid will slide one position to the right to accommodate the newly positioned photo. During this process the grid will be ghosted, and a reordering album loading indicator will display.
- 5 New Cover Photo in Place:** The newly selected cover photo is now in place.
- 6 Photos moved to the right:** All other photos have shifted one position to the right in the grid..



Editing Photo Tags

This page outlines the add/edit tag functionality within the context of editing a photo album.

- Add/Edit Tag Links:** Text links that, on click, invoke the Add/Edit Tag modal experience.
- Add/Edit Tag Modal:** This modal is invoked via a click of either the Add Tags, or Add/Edit Tags links in any photo cell of the grid. *For this point, all functionality is as seen on page 17 of this document, except that it is in a modal window.*
 - Cancel Button:** On click, the modal closes with no further action being taken. No new tagging is applied.
 - Okay Button:** On click, either a success or error modal is displayed.
- Success Modal:** Standard modal with descriptive text letting the user know the tags have been successfully edited.
 - Close Button:** Standard input button that, on click, closes the modal window and ends the editing process.
- Error Modal:** If there is an issue saving the edited tags for the photo, an error modal will be invoked. This modal will include an appropriate error description as message text.
 - Cancel Button:** Standard input button that, on click, closes the modal with no further action being taken. The tag is not edited.
 - Try Again Button:** Standard input button that, on click, tries to save the edited photo again, returning user to Point 2 on this page to start the save sequence again.



2

2a

2b

2c

Add Location

Type in a Zip code to set the location of your photo. Adding this helps us deliver more relevant photos to other users who might be in your area.

Enter Zip code

Cancel Add Location

3

3a

3b

3c

Edit Location

Type in a Zip code to set the location of your photo. Adding this helps us deliver more relevant photos to other users who might be in your area.

02134

Cancel Edit Location

4

4a

Add/Edit Location

The location of your photo is now 37923.

Close

5

5a

5b

5c

5d

Oops!

We don't recognize that Zip code. Try again.

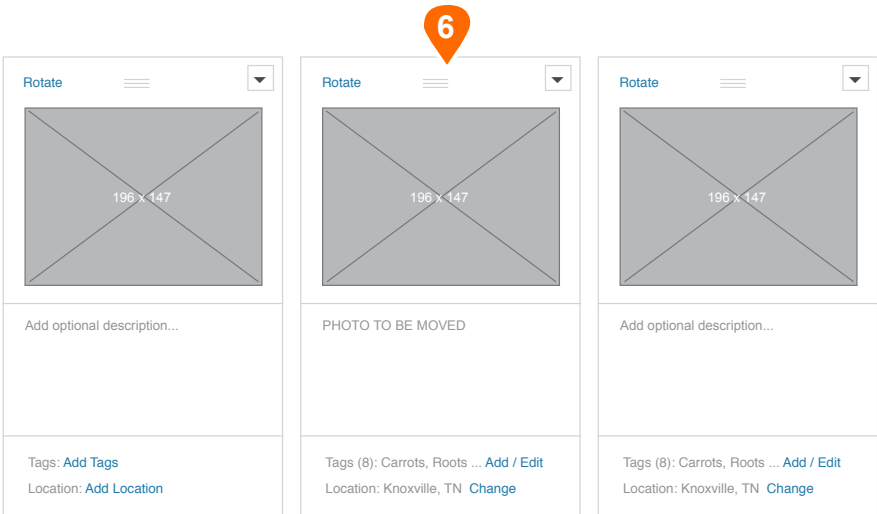
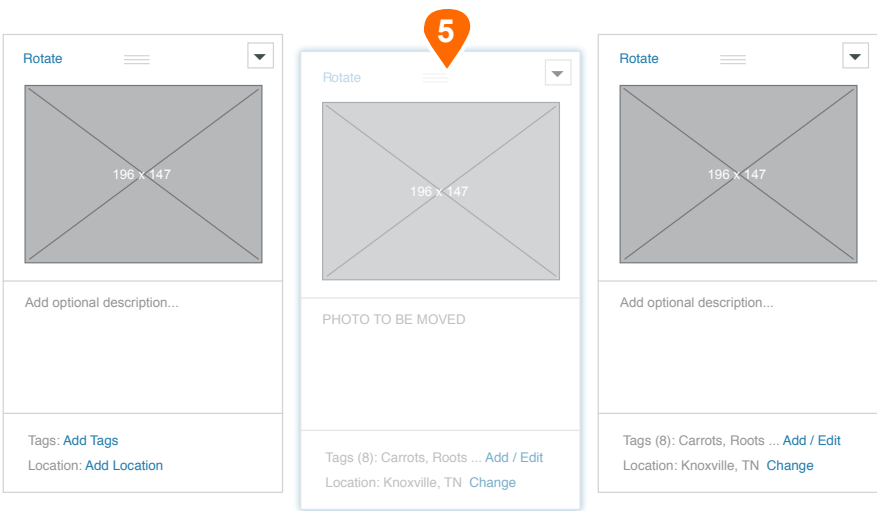
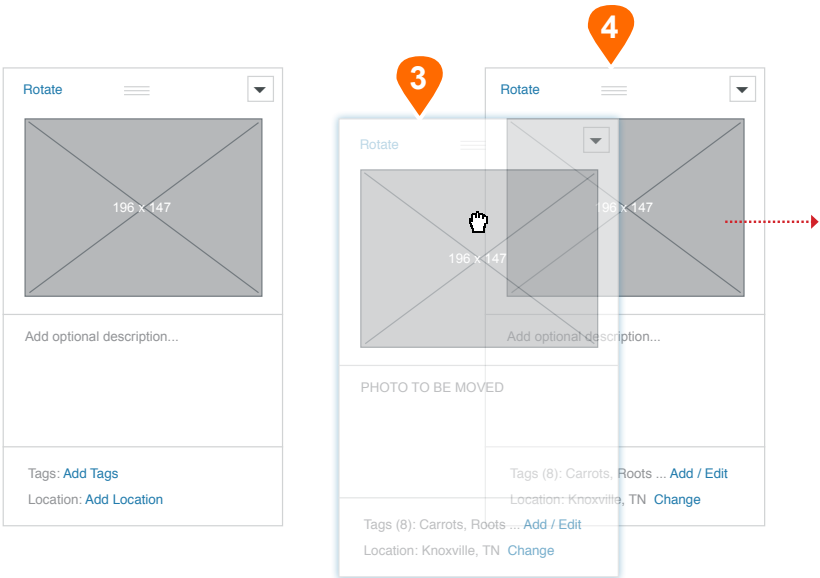
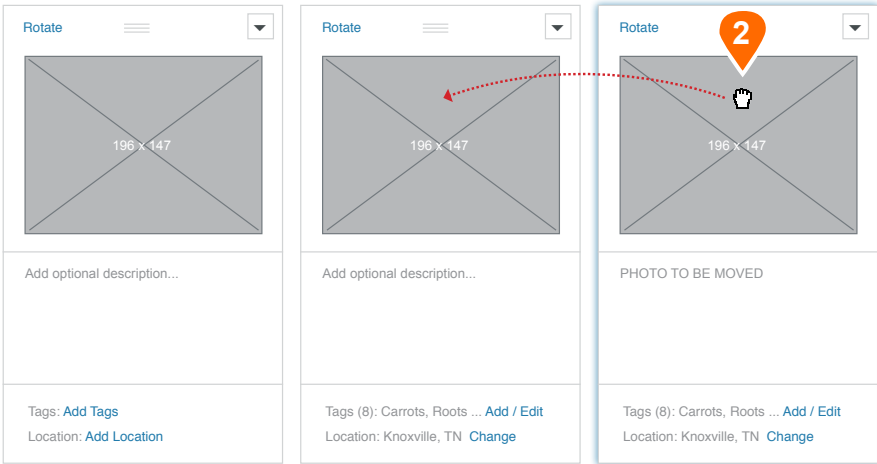
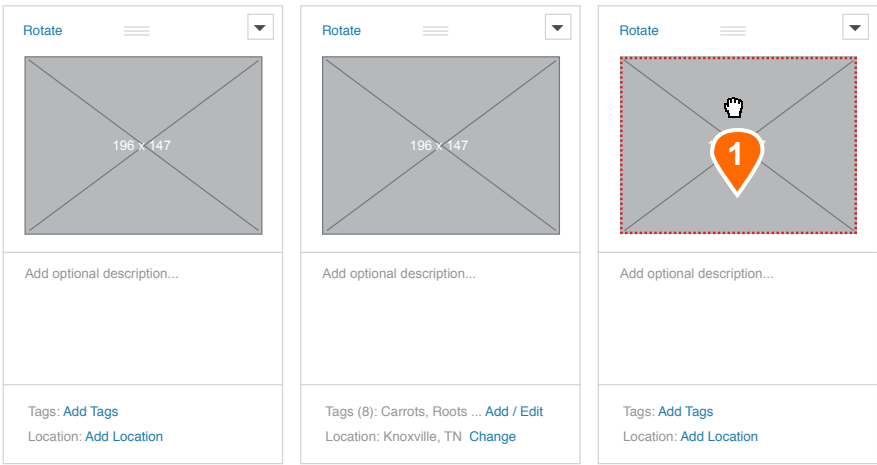
02134

Cancel Try Again

Adding or Editing Location

This page outlines the add/edit location functionality within the context of editing a photo album.

- Add/Edit Tag Links:** Text links that, on click, invoke the Add or Edit Tag modal experience, depending on whether or not the photos already has a location set.
- Add Location Modal:** This modal is invoked via a click of the Add Location link in any photo cell of the grid.
 - Cancel Button:** On click, the modal closes with no further action being taken. No new location is applied.
 - Add Location Button:** On click, either a success or error modal is displayed.
- Edit Location Modal:** This modal is invoked via a click of the Edit Location link in any photo cell of the grid.
 - Cancel Button:** On click, the modal closes with no further action being taken. No new location is applied.
 - Edit Location Button:** On click, either a success or error modal is displayed.
- Success Modal:** Standard modal with descriptive text letting the user know the location has been successfully edited.
 - Close Button:** Standard input button that, on click, closes the modal window and ends the editing process.
- Error Modal:** If there is an issue saving the location for the photo, an error modal will be invoked. This modal will include an appropriate error description as message text.
 - Error Message Text:** This is the message in the case that the user enters an invalid Zip code.
 - Text Input:** standard text input with incorrect Zip code as ghosted text. User may edit this text and change to new Zip code.
 - Cancel Button:** On click, the modal closes with no further action being taken. No new location is applied.
 - Try Again Button:** Standard input button that, on click, tries to save the edited zip again, returning user to Point 2 on this page to start the save sequence again.

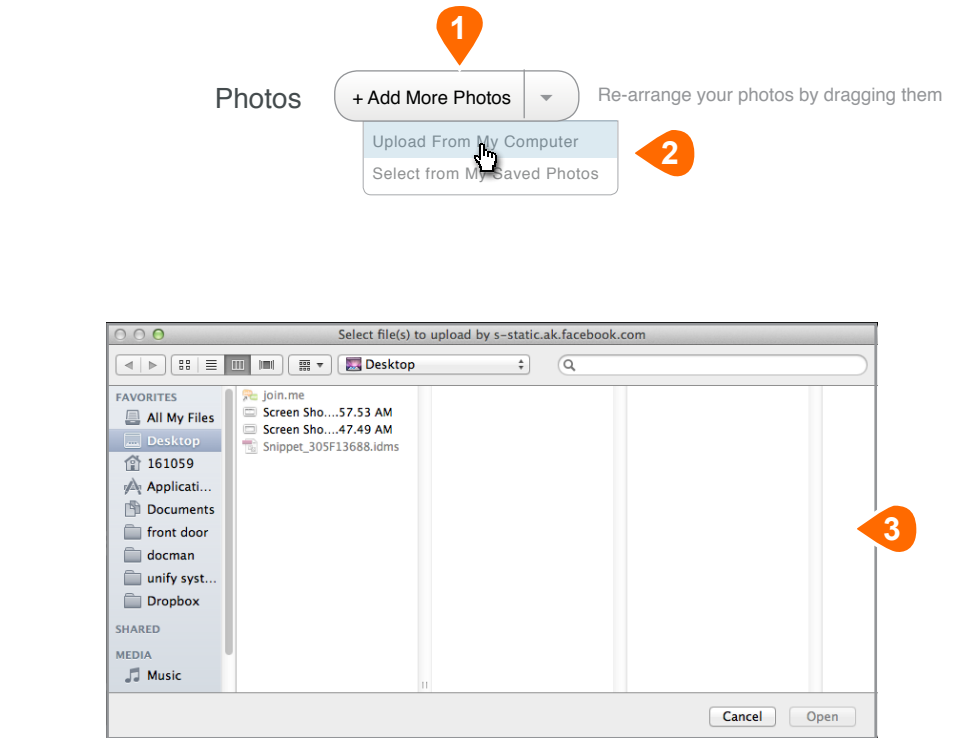


Reordering Photos in the Grid

This page outlines the functionality for the reordering of photos within the album edit grid. Our flow example is based on three photos, but the process applies for any number of photos, as long as there is more than one.

- 1 User Grabs Photo:** On mouse over any photo thumbnail, the cursor will change to the can drag cursor. On click, the cursor will change to the grab cursor, the photo cell will highlight, and it can be dragged to a new position. The valid grab area for the photo cell is the thumbnail area and the drag handle itself. The red dotted line just indicates valid grab zone for annotation purposes and is not a visual cue to the user.
- 2 Dragging:** On grab, the entire photo cell will highlight and become partially translucent, giving the appearance that the grabbed photo is floating above the other content on the page. User then may drag photo in any direction.
- 3 Drop Target Zones:** When a dragged photo enters a valid grid drop zone (in between photos in the grid) the drop zone will open up indicating the user may release the held photo.
- 4 Photo Displacement:** Displaced photos snap over one place to the right into the next grid space, pushing all photos after it over by one.
- 5 Grabbed Photo Release:** On release of the grabbed photo, the photo will snap into its place in the grid, and slowly fade back to 100% opacity.
- 6 Photo Reorder Complete:** Photos are now reordered and process may begin again.

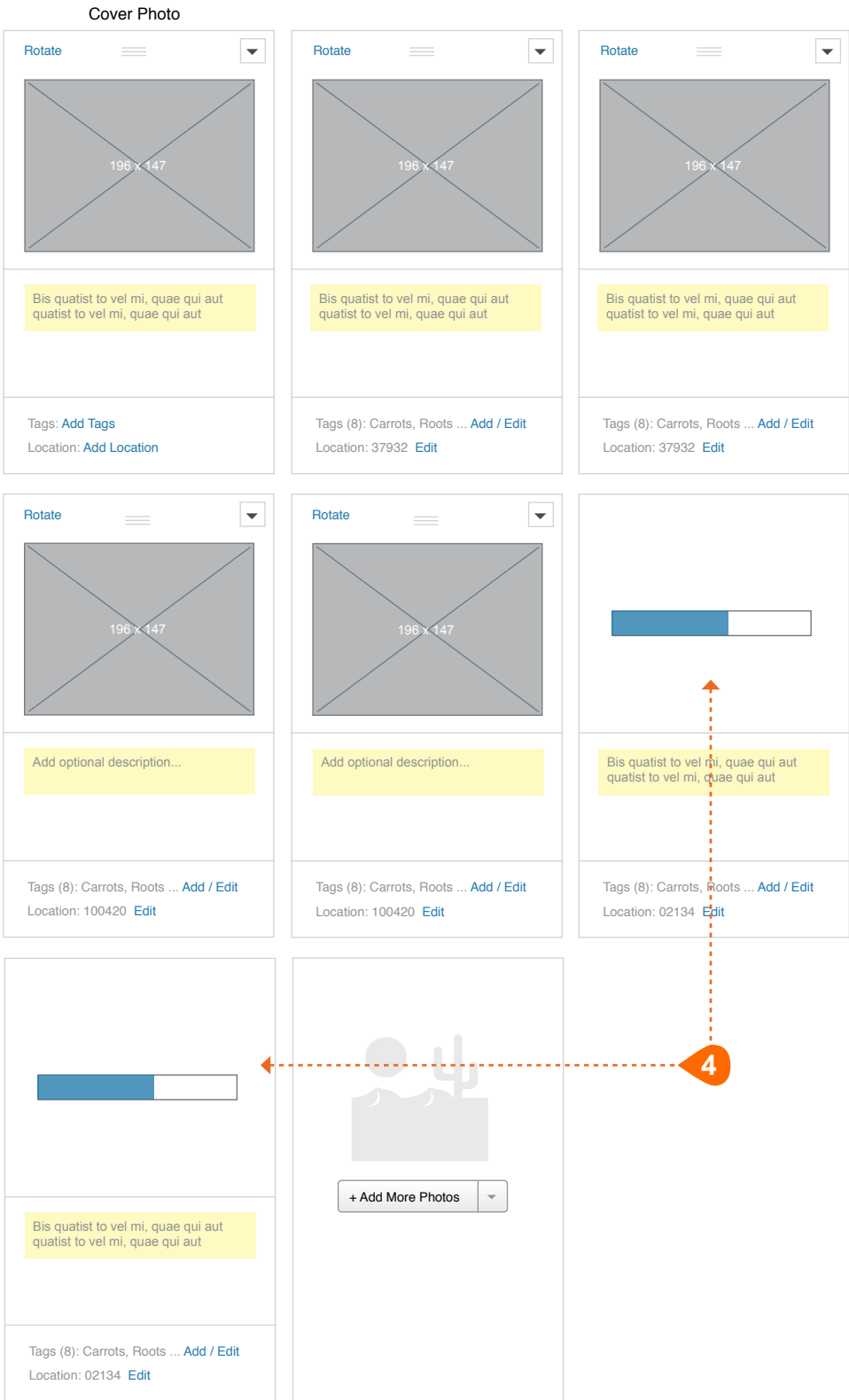
NOTE: If a user grabs a photo and releases before entering another valid drop zone, the photo will snap back into its original space.

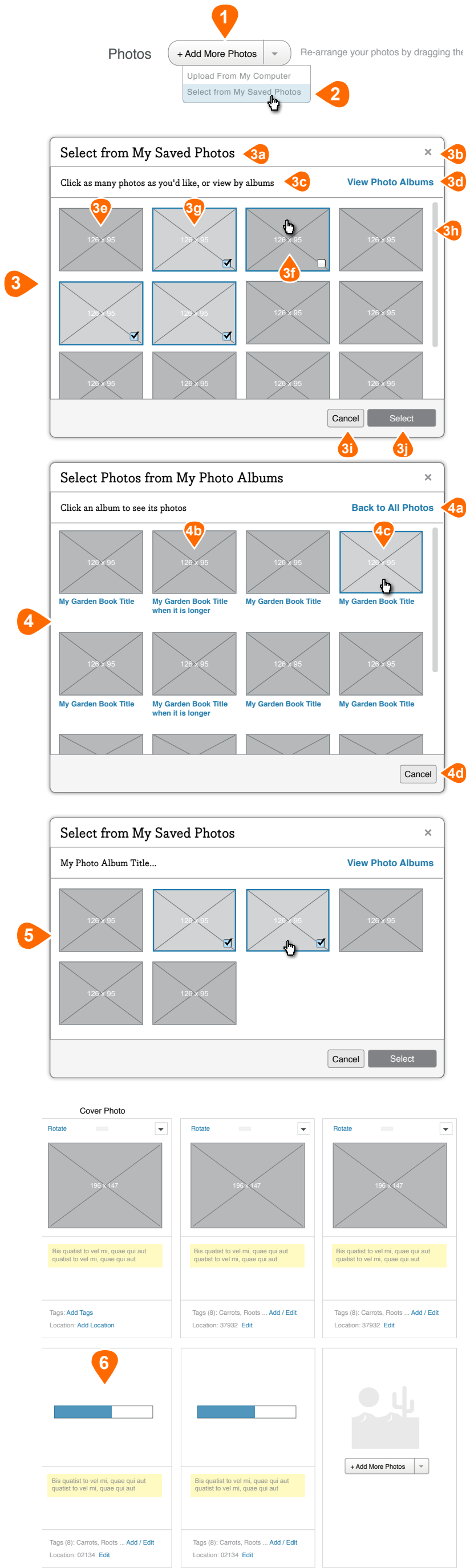


Uploading from Computer

- 1 Upload Button:** Spilt button that, on click, displays a select dropdown with options for selecting photo the upload source.
- 2 Select Dropdown:** User chooses to upload images from computer
- 3 OS File Select Menu:** Selection of the 'Upload From My Computer' option will launch the standard OS file select window. The user may then select a single or multiple (Ctrl+Click or Cmd+Click) images for upload. Clicking on the "Open" button on the OS window will begin the actual upload process.
- 4 New Photos Added to Grid:** The newly uploaded photos are appended at the end of the photo grid, but before the Add More Photos cell.

Photos shown here are in the process of uploading. Photos still in the upload process will display a status bar to monitor upload progress. Photos in upload process are not able to be interacted with until upload is complete. At that time, uploaded photos function as normal.





Selecting from Saved Photos

This selection is only available if the user has saved or uploaded photos into their profile. It is suppressed otherwise.

- 1 Upload Button:** Spilt button that, on click, displays a select dropdown with options for selecting photo the upload source.
- 2 Select Dropdown:** User chooses to upload from photos saved to their HGTVGardens profile. This selection is only available if the user has saved or uploaded photos into their profile. On select, the Select from My Saved Photos modal experience is initiated.

- 3 Select from My Saved Photos Modal:** On dropdown menu select, this modal is opened and users may select photos saved to their profiles to add to this album. The thumbnails are arranged in a four-across grid that may be scrolled inside the modal window.

- a. Modal Title:** Standard modal text title
- b. Modal Close:** On click of this icon, the modal window closes with no further action taking place. No checkbox selected photos are saved, and any selected are forgotten by the system.
- c. Message Text:** Simple message text
- d. View Photo Album Link:** Text link that, on click, closes the Select from Photos modal and opens the Select from Photo Albums modal where the user will be able to select a photo album to choose photos from. *See Point 4*

Note: There should be a noticeable transition between the closing on one modal and the opening of the other because the contents of each modal appear very similar. The first modal should fade out and the second modal should fade in. Fades should be quick and smooth. Decay and load time will need to be adjustable.

- e. Photo Thumbnail:** Standard 126x95 thumbnail. The grid will contain all photos the user has saved or uploaded into their profile.
- f. Thumbnail Hover State:** On mouse over any of the thumbnails in the grid, the photo will highlight and a select checkbox will appear as an overlay, allowing the user to select this photo to add to their album.
- g. Selected Photo Thumbnail:** Any photos selected via the checkbox will show as highlighted, and the selected checkbox will remain visible overlaid on the photo. Any selected photos may be deselected. Once deselected, the photo returns to the visual state shown in point 3e.
- h. Modal Scrollbar:** The modal is a fixed height with a photo viewing area sized to display part of the third row of photos. If a third row of photos exists (or more) a system scrollbar will appear to allow the user to browse the entire grid.
- i. Cancel Button:** On click of this button, the modal window closes with no further action taking place. No checkbox selected photos are saved, and any selected are forgotten by the system.
- j. Select Button:** Standard button input that, on click, adds the selected photos to the user's album.

- 4 Select from My Photo Albums Modal:** On click of the View Photo Albums Link (*Point 3d*), this modal is opened and users may select an album to narrow their photo selection by. The album thumbnails are arranged in a four-across grid that may be scrolled inside the modal window.

NOTE: Any functionality not specifically annotated in this modal is identical to the modal outlined in Point 3.

- a. Back to All Photos Link:** Text link that, on click, closes the Select from Photo Albums modal and opens the Select from My Saved Photos modal. *See Point 3*

Note: There should be a noticeable transition between the closing on one modal and the opening of the other because the contents of each modal appear very similar. The first modal should fade out and the second modal should fade in. Fades should be quick and smooth. Decay and load time will need to be adjustable.

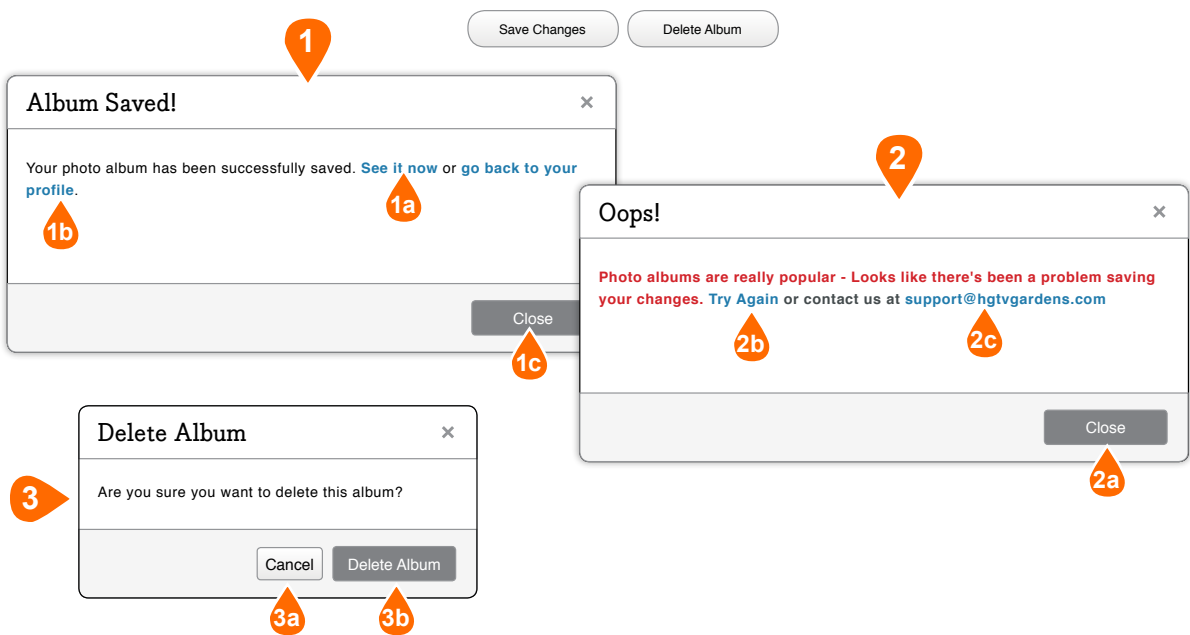
- b. Album Thumbnail:** Standard 126x95 thumbnail of the album's cover photo, followed by a text link of the album's title. Both, on click, select the album, close this modal, and opens the Album Specific Photo Select modal where the user may select individual photos from the selected album.
- c. Thumbnail Hover:** On mouse over, the thumbnail should highlight to show interactivity.
- d. Cancel Button:** On click of this button, the modal window closes with no further action taking place. No checkbox selected photos are saved, and any selected are forgotten by the system.

- 5 Select from My Saved Photos (Album Specific) Modal:** This modal only displays photos from the album selected in *Point 4*. All other modal functionality is identical to as outlined in *Point 3*.

NOTE: Any functionality not specifically annotated in this modal is identical to the modal outlined in Point 3.

- 6 New Photos Added to Grid:** The newly added photos are appended at the end of the photo grid, but before the Add More Photos cell.

Photos shown here are in the process of uploading. Photos still in the upload process will display a status bar to monitor upload progress. Photos in upload process are not able to be interacted with until upload is complete. At that time, uploaded photos function as normal.



Saving Edited Albums

Success and error modal states.

- 1 Album Save Success Modal:** On click of the save button, upon successful save, a success modal will display.
 - a. See it now link:** Link in success messaging that, on click, directs user to the album detail page.
 - b. Back to Profile Link:** On click, directs the user back to their main profile page.
 - c. Close Button:** On click, closes the modal, leaving the user on the album edit page for the album just edited.
- 2 Album Save Error Modal:** Standard error modal with appropriate messaging and link to try again, or send an email for help.
 - a. Close Button:** On click, closes the modal, leaving the user on the album edit page to try saving again.
 - b. Try Again Link:** On click, resubmits edited album for save. Either it will return the success modal, or, again, the error.
 - c. Email Link:** On click, opens the user's default email client, pre-populating the address field with the support email address. It should be coded so that the subject line is populated with, "Help! Problem Saving Edited Photo Album."
- 3 Delete Album Modal:** On click of the Delete Album button, a verification modal appears.
 - a. Cancel Button:** On click, modal closes, the album is not deleted, and user remains on the album edit page.
 - b. Delete Album:** On click, the album is deleted, and the user is directed back to their profile page with the album tab active.